



RULES AND REGULATIONS

Vehicle Requirements for all categories:

1. Any year/make/model vehicle equipped with a low range transfer case (4L) can participate in Standard and Modified categories (in tourism can be any 4x4 or AWD)
2. Vehicle must be street legal (Insurance, Tag and Registration up to date)
3. Any brand or type of tire is allowed up to 37" in diameter.
4. Vehicle must be in good working conditions that would not put its occupants and other's safety at risk. Vehicle must have no mayor fluid leaks.
5. The vehicle may not have any printed advertisment (stickers) bigger than 12 inches length from any brand that is not an official sponsor of the event, unless the participant pay the respective Advertisement Fee, cover it with any colored vynil or if it is from a non-profit foundation / club 4x4.
6. Each vehicle must have the following:
 - 6.1 Recovery Strap and two shackles
 - 6.2 First aid kit
 - 6.3 Spare tire, spare tire tools and wheel lock key (if equipped)
 - 6.4 Fire Extinguisher
 - 6.5 Water or hydrating drinks enough for all occupants for two days.
 - 6.6 Snacks and simple meals. There will be no time allotted for lunch stops.
 - 6.7 Satellite navigation device with GAIA GPS App installed.
 - 6.8 Cellphone and charger. Contact us at 954-406-1842.
 - 6.9 Outdoors camping gear
 - 6.10 Bug repellant
 - 6.11 At least \$30 in \$1 and \$5 to cover any WMA fees and such.
6. Glass bottles are prohibited in this event, even inside the vehicle. Those who wish to bring alcoholic beverages will need to do so in plastic or aluminum containers. Alcoholic beverages consumption is only allowed inside the campground once the vehicle is parked for the night. No open container policy will be enforced.
7. Any vehicle that does not meet these requirements will not be allowed to participate and will forfeit the admission fee



Additional requirements for Modified category.

1. Modified vehicles can only participate in teams of two vehicles.
2. Tires must be of at least 33" in diameter and no more than 37" in diameter.
3. An operating winch, tree saver straps and recovery gloves (per vehicle)
4. Operational Snorkel
5. Radio communications devices. There will be no cellphone coverage in most of the areas.
6. **NO KIDS UNDER THE AGE OF 18 WILL BE ALLOWED IN THIS CATEGORY. NO EXCEPTIONS.**

Additional requirements for Standard Pro category.

1. Tires must be of at least 33" in diameter and no more than 37" in diameter.
2. An operating winch, tree saver straps and recovery gloves
3. Operational Snorkel

PARTICIPANTS

1. Anybody with a valid driver's license can participate.
2. At least two occupants per vehicle in standard and modified categories is required. Both occupants must have a valid driver's license.
3. Driver must be properly insured.
4. Up to 5 occupants per vehicle is allowed in Standard and Modified categories.
5. Minors are allowed in Standard Pro, Standard Stock and Tourism categories when at least one parent or guardian is participating and in the same vehicle.
6. Before the event, every participant must sign a release and waiver to the organization and its members.
7. Participants must behave in a polite and cordial manner with all those involved in the event, organizers and other participants as well as with the inhabitants of the towns to be visited, parks, campers and the general public, maintaining high morals and good customs.



8. All participants should show good behavior and respect for other in and out of the event. All participants must follow all rules, regulations and laws that apply.
9. Everyone is responsible for picking up their trash and maintain campsites and every other area where this event is developed as clean as possible.
10. Participants MUST follow the principles of Tread Lightly; do not open new trails, do not deforest and do not litter. In the event that a participating team opens new trails, deforesting and causing damage to the environment voluntarily, having been able to use open legal roads, the penalty will be the automatic disqualification and expulsion from the event.
11. It is the responsibility of the participants to read and abide by the provisions of the different reserves, forest areas, Wildlife Management Areas and any other area with special regulations.
12. The use of firearms is prohibited during this event.
13. Alcoholic beverages are ONLY allowed at base camp and once the vehicles are parked for the day; this means no drinking unless your vehicle will not be used until the next day.
14. Quiet times are from 11:30 p.m. to 6:30 a.m. During this time, no music is allowed, and moderation is required for those who wish to stay up late.
15. The maximum speed within the camp and its surroundings is 10 MPH. Any participant who exceeds the speed limit, drives recklessly, performs maneuvers that endanger other attendees will be expelled from the event without the right to any refund.
16. Any violation of these rules will incur a penalization for the participant's team or even the expulsion from the event.



THE XPERIENCE

Overlanders Xperience is an organized adventure in which participants will have to follow a series of waypoints in a predetermined distance and time frame, overcoming obstacles and challenges in order to get the less penalization points to win the Xperience. It will be 2 or 3 days of driving with two or more nights camping. The Xperience starts on Friday with check in hours posted for each event, some Friday nights, Saturday and Sunday will be driving.

This is not a speed race, not a guided trip either. Participants will have to navigate by themselves in between checkpoints in the time and distance allotted in a road book that they will be given. There will be special challenges between checkpoints, if are not completed it will be penalized.

1. Participants will receive an email 3 days before the event that will include the location of Basecamp and the files with coordinates.
2. Participants must register at Basecamp on Friday at the hours given by the organization with vehicles ready and meeting all the requirements described before. **You must have a full tank of gas.**
3. Once you arrive at Basecamp, you will proceed to a vehicle's technical inspection and equipment verification.
4. Once the inspection is completed and approved, a member of the OX staff will give you a form that you must present at the Check-In station.
5. All participants must go to the check-in station to confirm their entry and verify personal information. They will also be checked to had sign the Waiver & Release and receive a Welcome kit (T-shirts, stickers, roadbook, etc).
6. Once this procedure is completed, the vehicle must be parked to camp where the organization indicates.
7. Participants will need to place the stickers given in their vehicles. There will be a specific order for them.
8. On Friday night there will be two mandatory technical meetings for the Standard Pro, Standard Stock and Tourism categories, at least one member of each team must be present at one of the meetings to listen to the recommendations and possible changes to the schedule, The attendance list will be passed and the team that is not present will have a penalty of 200 points.
9. Saturday a Technical meeting will be hold on main stage and at least one member of each team of all categories must be present.
10. Pole position will be determined by the order on which participants registered except for the first 3 spots that will be assigned to the winners of the previous Xperience.



11. Vehicles will depart at the time designated by staff members and following NIST US Time (time.gov). There will be a 1-5 minutes interval in between vehicles.
12. Once at the starting position (Basecamp) the exact time at which each team started will be noted. The participating team may start its route at the first Checkpoint at the exact time that corresponds to it according to the roadbook but not before.
13. At the start time, vehicles will need to search for the next checkpoint established in the roadbook; trying to meet the distance and time noted as well as the suggested average speed.
14. It is the duty of the participants to keep track of the miles traveled and times so that they have control over their performance in the competition using the Gaia GPS application. The so-called Checkpoints will be used to measure the travel time between them but will not have the presence of technical personnel since all the performance of the participants will be evaluated through the tracks of their GAIA GPS device.
- 15. Competitors must record the “TRACK” of their route in GAIA GPS during the competition from the first CheckPoint to the last CheckPoint, and share them as a link to the email: info@oxrally.com assigning a name containing the category, its team number and the corresponding day, All teams MUST send their tracks or will be disqualified. Name of tracks must be like these: examples: STD07SAT (Standard, Team 07, Saturday) MOD03FRI (Modified, Team 03, Friday). Same name should be used as email subject.**
- 16. There could be more checkpoints in the route, participants must get to them in the time given in the roadbook without stop recording the track in GAIA GPS, the track must record from the first Check Point to the last Check Point.**
17. In between some checkpoints, there will be a “challenge” established in the Roadbook, which will need to be completed before the next checkpoint to avoid penalty points. These challenges might include some light physical activities such as walking, finding a hidden object in the bushes or taking a picture or selfie.



18. The sections of the route that go from the Basecamp to the first Checkpoint and from the last Checkpoint to the Basecamp are normally by asphalt roads, streets or highways, in these sections called "link stages" the time reflected in the road book is estimated purely as ideal time, It will not count for the competitive evaluation, however the competitors must arrive at the Basecamp before the maximum time designated for the special challenges (if any) or they will not be able to perform them and will be penalized with the points established in the penalty table.
19. The scoring will be based on mileage and time between the first and last check point. This will be done verifying the track recorded in the Gaia GPS APP. Teams must share the track link to info@oxrally.com and it should be named as explained above. In the "link stages", the distance traveled will not be taken into account for the evaluation, giving the opportunity to repair or search for necessary spare parts to the competitors, also they should not appear on the track recorded in Gaia because it should only be recorded from the first checkpoint to last checkpoint.
20. Participants must go through ALL the points of the road book, Check Points & Waypoints in the order given and in the amount of miles and time specified. In case of omission of any of them, they will receive the penalty described in the respective section of these regulations.
21. At some point during the Xperience, vehicles might enter certain Wildlife Management Areas (WMA), National or State Forests that require the payment of a fee. The payment stations or "Iron Rangers" will be marked in the roadbook as a Challenge with the phrase: "Pay Fee". It is the participants obligation to read the signs, instructions and deposit the payment in the envelopes provided at the pay station. To complete this challenge, a picture of the payment needs to be taken.
22. Overlanders Xperience emphasizes in Tread Lightly. Don't open new trails, watch for signs that prohibit the use of motor vehicles and respect all rules and regulation that each WMA or Forest has.



23. The Overlanders Xperience is a self sustained off road competition; that means that competitors are by their own and will have to solve any possible adversity on the route, (vehicle failure, down trees, stuck vehicle, etc.) competitors may help each other but they are not obligated to do so. In extreme cases when a vehicle can't be recovered after several intends, we suggest to leave it and take a ride in other competitor's vehicle to the Basecamp, the organization will try to help through volunteers but **will not go to rescue any competitor.**
24. It is totally forbidden for those attending the event to interfere, sneak or participate in a route that does not correspond to their category, as well as inviting people not registered in the event to join them in any section of the route or interfere with the development of competence. If they are denounced, seen, and evidenced with photographs or videos, the responsible team will be disqualified and expelled from the event.
25. Any team that deliberately spills oil or other polluting liquids into the environment will be disqualified without exception.
26. Participants must record on video any irregular activity committed by other teams like infractions against the environment, against other participants or lack of sports ethics. Passing on foot with the Gaia GPS device through an obstacle and "bypassing" the vehicle through another path, will be considered as cheating. The Gaia GPS device must be inside the vehicle at all times during the route unless the roadbook indicates otherwise. The technical staff will examine any evidence and will penalize the respective team in accordance to the fault committed.
27. Each day of the Xperience, all vehicles will return to Base camp. This means that all camping gear, trailers, support vehicles and such can be left at said location.
28. The use of grills, portable kitchens, griddles and other cooking devices is allowed.

WAYPOINTS



1. There are different types of waypoints and they can be differentiated by their nomenclature; they comprise four numbers and two letters (####XX). First number indicates the day of the competition (1 for day 1 and 2 for day 2); the next three digits indicate the position of the checkpoint in consecutive numbers. The two letters indicate the type of waypoint.
2. The Basecamp is the start and finish point for both days.
3. The common points for all categories are called CommonA, CommonB, CommonC, etc and should be followed as explained in the roadbook.
4. The letters CP (Checkpoint) indicate points where we will measure the time that takes from one Checkpoint to another. Starting in the first Check Point (####CP) to the last one, we will verify your time at any point with this nomenclature ####CP , remember that this will be done with your own track, and you have to keep it recording from the first to the last Check Point.
5. The letters WP (Waypoint) indicate information of interest such as Pay Stations, Turns and more.
6. There are other nomenclatures that may be used depending on the case, the points called SC correspond to a Special Challenge, where it could be asked to take a picture, video, or any other instruction noted in the roadbook.
7. According to the nomenclature of the waypoints, the mean is as follows:
1007WP: 1st day waypoint, #7 in the sequence, Waypoint (point of interest)
1012CP: 1st day waypoint, #12 in the sequence, Checkpoint. (Time evaluation)
2019SC: 2nd day waypoint #19 in the sequence, Special Challenge (Follow roadbook instructions)

PENALTIES

1. All occupants of each vehicle must keep their **seat belts** buckled at all times.



2. Every team must be represented by at least one member on the respective technical meetings, otherwise they will be penalized with **200 points**.
3. It is the Team's responsibility to record the track of each day in Gaia GPS app and share it as a link to info@oxrally.com with the correct name explained before, Alteration, disconnection or lost of part or entire track will automatically **disqualify** the team without objections.
4. The Links corresponding to the tracks of each team must be sent to the email info@oxrally.com maximum 5 days after the end of the event (next Friday at 11:59 pm) with the corresponding nomenclature, both the name of the track and the title of the email, they must also send the required videos or photos as special evidence. All information received after that date or without the required nomenclature, will be discarded and classified as invalid. Large size videos can be sent by wetransfer.com
5. **Participants must pass through all the points described in the route; Checkpoints and Waypoints, the omission or lack of crossing by any of the points will have a penalty of 400 points and it will be taken as omitted when the track is at a distance greater than 30 feet from the corresponding point. The distance will be taken through the function "create route" of Gaia GPS app taking into account that any part of the circumference of the extremes touches the waypoint icon and the track line. (View picture P5 example at the end of this rulebook).**
6. Time in between checkpoints will be measured and vehicles must meet the time allowed in the roadbook for each section. Arriving **1 minute early** will incur in **20 points** while arriving **1 minute late** will incur in **10 penalty points**.
7. Distance in between checkpoints will be measured using the track recorded in Gaia GPS by each team. Vehicles must try to meet the distance mentioned in the roadbook. **40 penalty points** will incur per every **mile under** and **20 penalty points** will incur per every **mile over** the distance allowed. These points can be fractioned based on the number of miles over or under.
8. The way to evaluate the miles and the time traveled between checkpoints will be through the Gaia GPS application based on the stats of the detailed page of the track sent by the team. Time of arriving for checkpoints in-between the first and the last waypoint will be checked hovering over the graph to find the corresponding time location on the map. **View picture P8 example at the end of this rulebook.**



9. During the development of the Xperience, Special Challenges will be presented and must be completed by the participants, they can be of different types such as recording the passage of the vehicle through a special obstacle, through a waypoint, walking outside the vehicle, taking pictures, video, data of any nature, games, posting on social media, etc. These Challenges in case of not being fulfilled by the participants will be penalized with **400 points**.
10. The **Special Challenges** to be completed **at the basecamp or in any other location supervised by the technical staff**, will be explained on site, it is the duty of the participants to pay attention to the instructions and comply with all the regulations described to pass the test. Failure to complete the test within the maximum time established or under the instructions given, or not showing up on time, will be penalized with **600 points**. In the case of timed special events, the score for the teams will be as follows:

Place	Points
1	-10
2	-9
3	-8
4	-7
5	-6
6	-5
7	-4
8	-3
9	-2
10	-1
>11	0
DNF or DNS	600



11. The team that is not ready to start the Special Challenge in their respective turn, will have up to 10 minutes after the last competitor to appear at the starting point.
12. Teams that for whatever reason, cannot finish or abandon the route of one of the days, will be able to continue competing but will have a penalty of **6000 points**.
13. Any team or team member that shows disorderly conduct or bad behavior, or that might put others at risk, will be penalized with a number of points that the organization deems "fair" depending of the gravity and can even lead to disqualification and expulsion from the event and possibly future events.
14. In the case of the Modified Category, this regulation applies the same to both vehicles, but their times and miles will be calculated based on a single track, the one sent by the team, and it may be from either of the two vehicles. Only the track of one of the vehicles must be submitted for evaluation.
15. In the case of a tie in points of two teams in the result of a competition, the total time showed in the statistics of the detailed page of the track will be examined and the team that has the least amount of minutes stopped, will be considered the winner.
16. Any other fault committed by any participant not mentioned in this rulebook will be evaluated by the organization and a decision will be made accordingly. Likewise, the organization reserves the right to change any rule of this regulation, penalties, decisions, ratings, prohibitions, expulsions and other changes; before, after or during the competition or when it considers that said decision is the best for the development of the same, without having to make any kind of prior notice to the participants or other people involved in the competition.
17. The team that believes a review of the results is necessary, must submit its request by email to info@oxrally.com and wait for the reasonable time estimated by the technical committee for an effective response. Calls or messages will not be answered, much less comments on social media. Likewise, the team that discredits, insults or doubts the prestige of the OX organization or any of its competitors or staff in any social media will be penalized respectively and their claims will be automatically discarded.



Penalty Points Table

FAULT	PENALTY POINTS
Technical Meeting Missed	200
Gaia Track Missed / Altered / Sectioned	DQ
Any Missed Point	400
One Minute Before	20
One Minute After	10
Did Not Finish (One Day)	6,000
One Mile Less	40
One Mile More	20
Omission or Failure To Complete a Special Challenge	600
Omission of any Picture or Video Challenge	400



2021 Championship

1. It will be considered an annual Overlanders Xperience championship when 4 or more (valid) events take place during a calendar year.
2. The categories that participate in the annual Overlanders Xperience championship are: Standard Pro and Modified.
3. To obtain points and win the annual Overlanders Xperience championship, the competing team must meet the following requirements:
 - 1- Compete in at least 75% of the valid events of the year (3 of 4) (considered for the championship)
 - 2- Maintain the same Driver per vehicle (being able to change vehicles, co-driver or other team members) In the case of the Modified category, both drivers must participate together in each valid.
4. The score that each team will obtain per valid event will be assigned according to their performance as follows:

PLACE	POINTS	PLACE	POINTS
1	25	11	12
2	23	12	11
3	21	13	10
4	19	14	9
5	18	15	8
6	17	16	7
7	16	17	6
8	15	18	5
9	14	19	4
10	13	20	3



5. The winner of the 2021 Championship will be the team that obtains the most points at the end of the year by adding all the points obtained in the corresponding valid event as explained before.
6. In the event of a tie, the winner will be the team that has had the most First places, if the tie continues, we will proceed with Second places and finally Third places.
7. The winner of the annual championship will have a special award to be defined by the Overlanders Xperience organization and will be obliged to accept the conditions for the granting of said award.
8. In the event of not being able to complete the annual championship within the corresponding calendar year due to major, political, economic, climatic or health causes (pandemics), the valid events may be postponed and held later until the 4 minimum events for the championship are completed.



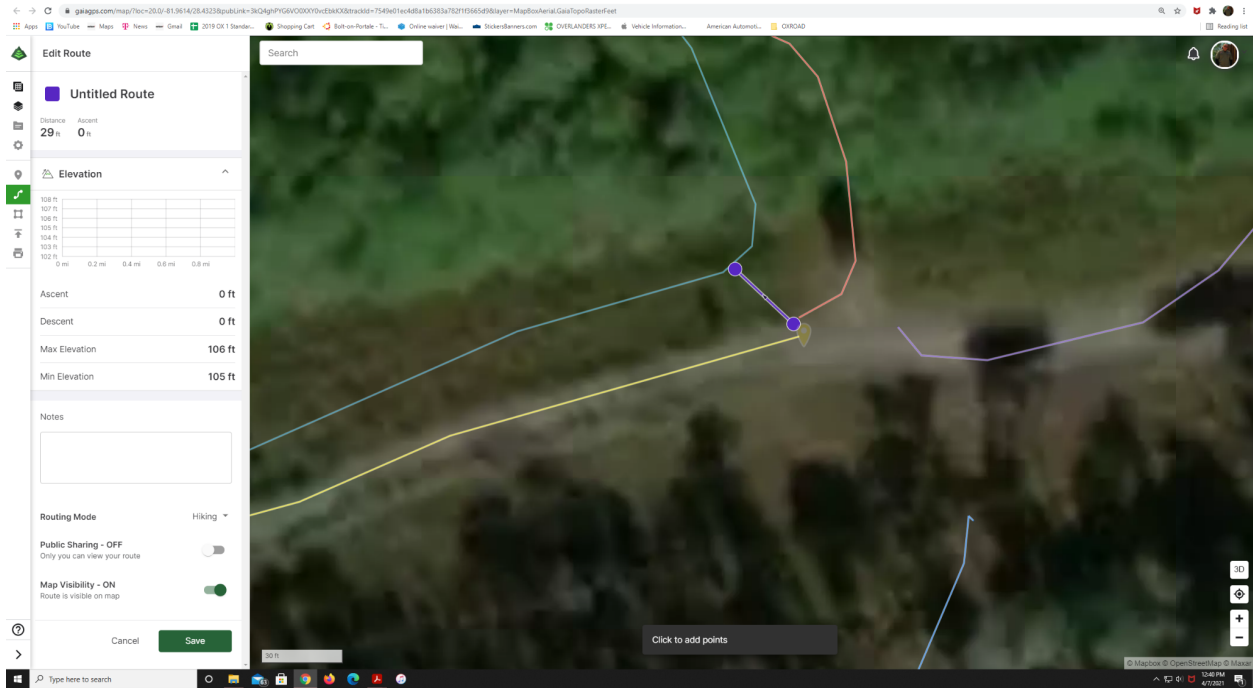
Each Xperience's road book will contain the following information:

1. Waypoints
2. Distance in miles
3. Total distance: accumulated distance from start point.
4. Partial Distance: Total miles to the next waypoint.
5. Partial Time: Time allotted to the next waypoint in HH:MM:SS
6. Average Speed: suggested average speed in between waypoints.

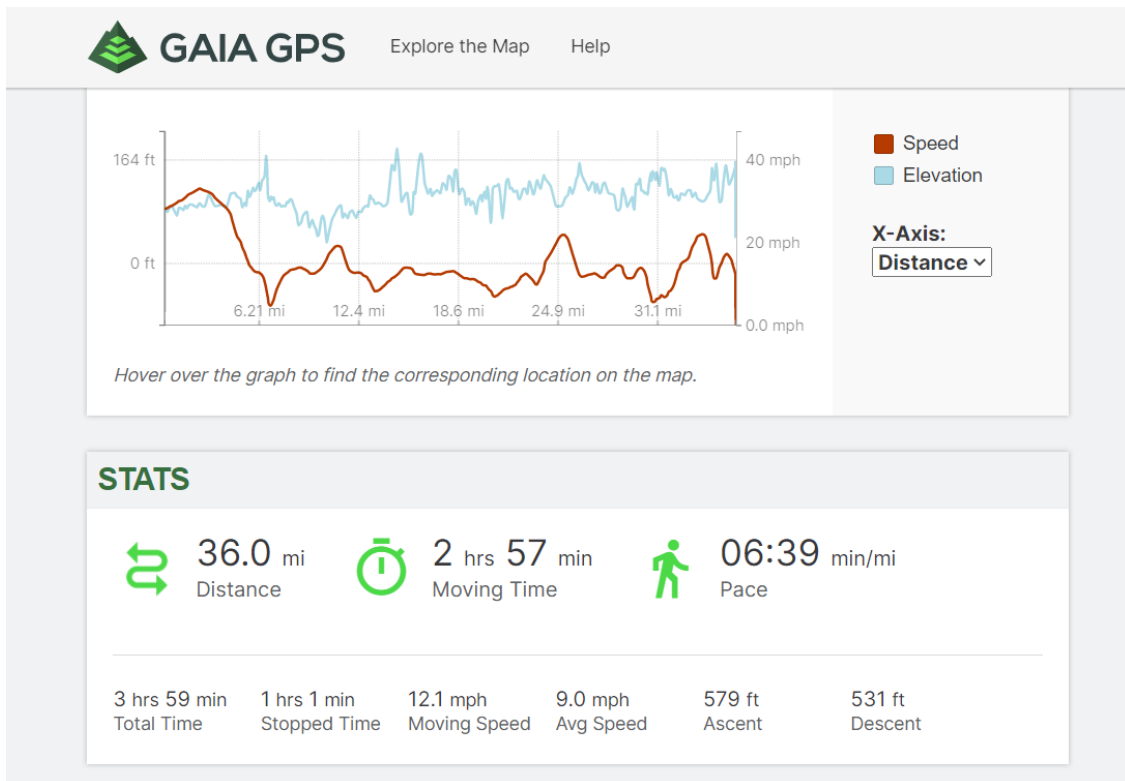
Example:

2021 OX7 Modified Roadbook / Night Route					
Waypoint	Distance miles		Partial Time HH:MM:SS	Average Speed	Starts at 7:00 p.m.
	Total	Partial			Notes
BaseCamp	0.00				Starting Line
Common A	2.40	2.40	0:04:00	36.00	Gas Station
Common B	4.80	2.40	0:03:00	48.00	Gas Station
Common C	14.50	9.70	0:12:00	48.50	Gas Station
1001CP	18.80	4.30	0:05:00	51.60	Start Recording Your Track / Your Time Starts Here
1002WP	22.14	3.34	0:12:00	16.70	
1003WP	24.13	1.99	0:08:00	14.93	
1004CP	27.81	3.68	0:12:00	18.40	Checkpoint / Your time will be evaluated TO here / keep recording your track (Do not stop recording)
1005CP	32.18	4.37	0:06:00	43.70	Checkpoint / Your time will be evaluated FROM here / keep recording your track (Do not stop recording)
1006WP	38.22	6.04	0:16:00	22.65	
1007WP					WARNING: Several Fallen Trees
1008WP	40.11	1.89	0:14:00	8.10	
1009WP	46.24	6.13	0:16:00	22.99	
1010WP	50.68	4.44	0:12:00	22.20	
1011WP	56.28	5.6	0:14:00	24.00	
1012WP	59.09	2.81	0:03:00	56.20	
1013WP	63.20	4.11	0:17:00	14.51	
1014WP	63.81	0.61	0:02:30	14.64	Follow Given Water Track / Be Careful
1015WP	64.30	0.49	0:03:30	8.40	
1016WP	66.10	1.80	0:08:00	13.50	
1017WP	66.54	0.44	0:02:00	13.20	
1018WP	68.54	2	0:11:00	10.91	
1019WP	73.66	5.12	0:15:00	20.48	
1020WP	75.42	1.76	0:07:00	15.09	
1021CP	77.63	2.21	0:09:00	14.73	Finish Your Track, save it MOD##Day1 (##=Team Number) and Share Link to info@oxrally.com
Common D	79.03	1.4	0:02:00	42.00	Gas Station
Common C	97.43	18.4	0:20:00	55.20	Gas Station
Common B	107.13	9.7	0:12:00	48.50	Gas Station
Common A	109.53	2.4	0:03:00	48.00	Gas Station
BaseCamp	111.93	2.40	0:04:00	36.00	Finish Line
TOTAL Night Route	111.93		4:13:00	26.54	
Special Challenge: Send Two Action Videos of the Route to info@oxrally.com (MOD##)					

P5:



P8:



P9:



GAIA GPS

Explore the Map

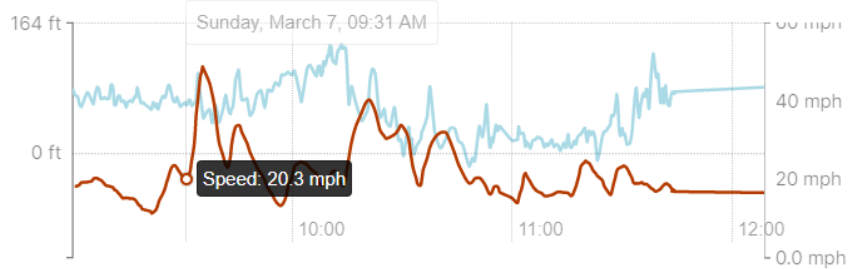
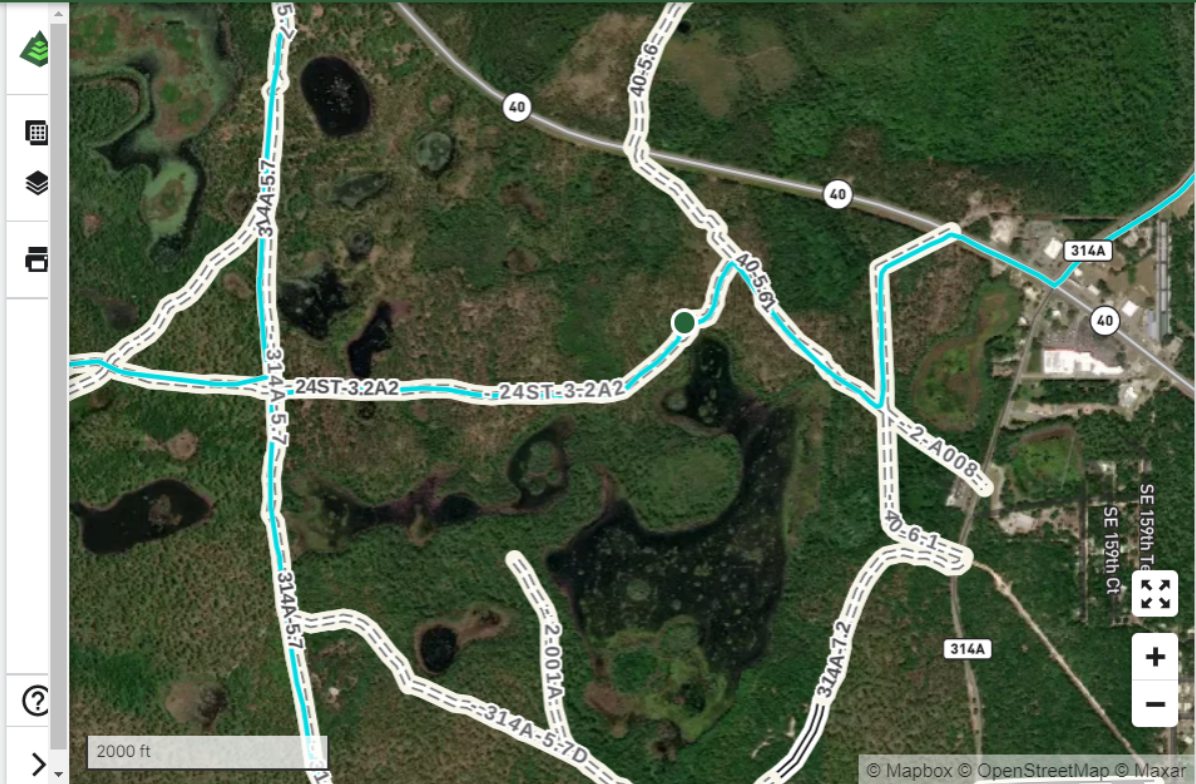
Help

+ Add to My Tracks

Data

Drive to

FlagAs Inappropriate



Hover over the graph to find the corresponding location on the map.

Speed
Elevation

X-Axis:

Time