



BRONCO™

BUILT WILD
ACCESSORIES



FORD ACCESSORIES
accessories.ford.com

Computer-generated images with available features and aftermarket equipment shown throughout.

THE FORD ACCESSORIES ADVANTAGE

At Ford, we understand that accessories are a key component of the Bronco Ownership Experience. Every Bronco was designed with customization in mind as we know that each one will be used for a different adventure. Everything about the Bronco, including our accessories, are Built Wild!

- Quality products approved by Ford and designed specifically for your application
- Engineered to integrate with on-board vehicle safety systems such as airbag deployment sensors
- Include the costs of Ford accessories in Ford Credit financing or Red Carpet Lease
- Covered by the 3-year/36,000-mile New Vehicle Limited Warranty when installed at time of purchase (see dealer for limited warranty details)
- When you require warranty service on a Ford Accessory, you can go to any Ford Dealership

Find out more at accessories.ford.com



FORD ACCESSORIES
accessories.ford.com

ON THE COVER: Bronco Badlands 4-door with Large Roof Platform Rack. Professional driver on closed course. Always consult the Owner's Manual before off-road driving, know your terrain and trail difficulty, and use appropriate safety gear.



BRONCO™

BUILT WILD

ACCESSORIES

BRONCO OUTFITTER PACKAGES

Camp	4
Wheeling	4
Snow	4
Water	5
Bike	5
Open Air	5

CARGO AREA

Cargo Organization	7
Liners & Mats	8

ELECTRONICS

Audio, Dash Cam	10
Rear Seat Entertainment	10
Remote Start, Security	11
Lights & Treatments	12

EXTERIOR

Fender Flares, Bash Plates	14, 15
Trim Kits	16
Covers, Storage Bags	17-19
Paint & Hood Protectors	20
Roof	21
Graphics & Stripes	22, 23
Storage Covers	24
Doors	25
Rock Rails, Tube Steps, Winch	26
Hitches, Towing & Recovery	27, 28
Performance	29
Splash Guards, Tents	30

RACKS & CARRIERS

Yakima Racks & Carriers	32-38
Thule Racks & Carriers	40-42

INTERIOR

Ash/Coin Cups, Vaults	44
Comfort, Convenience, Pets	45, 46
Door Sill Plates, Floor Mats	47
Interior Trim, Safety/Emergenc	48
Seat Covers	49

WHEELS

Lugs, Locks, Compressor Kit	50
Trim Rings, Wheels	51



Cargo and load capacity limited by weight and weight distribution. Aftermarket accessories shown.

OUTFITTERS PACKAGES

Ford Accessories offerings include over 200 products to choose from to help you create your very own style of adventure. Select from our wide range of dealer-installed accessories and make a package that will outfit your new Bronco the way you want for your next off-road adventure. The following suggested packages are just a few examples of how Ford Accessories can enhance the Bronco experience.

A. CAMP PACKAGE

Package includes:

- HD Tent by Yakima – Page 30
- Swing Gate Table by Tuffy – Page 8
- Mirror-mounted Pod Lights by RIGID – Page 12
- Cargo Area Liner – Page 8
- Crossbars by Yakima – Page 32



B. WHEELING PACKAGE

Package includes:

- Ford Performance Winch by WARN – Page 26
- Rack-mounted Light Bar by RIGID – Page 12 (LATE AVAILABILITY)
- Mirror-mounted Pod Lights by RIGID – Page 12
- Roof-mounted Platform by Yakima – Page 35
- Recovery Boards – Page 28
- Recovery Boards Mount by Yakima – Page 36
- RotopaX Mount by Yakima – Page 36
- Recovery Kit by Ford Performance – Page 28
- High Lift Jack Mount by Yakima – Page 36



C. SNOW PACKAGE

Package includes:

- Roof-mounted Ski/Snowboard Carrier by Yakima – Page 37
- Cargo Box by Yakima – Page 34
- Cargo Area Liner – Page 8
- Mirror-mounted Pod Lights by RIGID – Page 12
- Crossbars by Yakima – Page 32





D

D. WATER PACKAGE

Package includes:

- Kayak Carrier by Yakima – Page 33
- Tube Doors – Page 25 (*LATE AVAILABILITY*)
- Awning by Yakima – Page 32
- Neoprene Seat Covers by Coverking – Page 49
- Powersports Soundbar by JBL Harman – Page 10
- Swing Gate Table by Tuffy – Page 8
- Paddle Holders by Yakima – Page 33



E

E. BIKE PACKAGE

Package includes:

- Crossbars by Yakima – Page 32
- Ford Performance Air Compressor Kit – Page 50
- Small Basket by Yakima – Page 34
- Roof-mounted Bike Carrier by Yakima – Page 32



F

F. OPEN AIR PACKAGE

Package includes:

- Bimini Top by Bestop – Page 21
- Mirror-mounted Pod Lights by RIGID – Page 12
- Tube Doors – Page 25 (*LATE AVAILABILITY*)
- Powersports Soundbar by JBL Harman – Page 10



BRONCO™

CARGO AREA ACCESSORIES



FORD ACCESSORIES
accessories.ford.com



A. CARGO AREA ENCLOSURE, FIXED LID

Organize and secure the gear in the back of your Bronco. Sensitive items remain securely hidden from view with the vehicle top on or off.

- MOLLE grid design allows use of MOLLE storage bags for organization
- Creates a secure area when the rear vehicle door is closed and locked
- Rubber perimeter seals for a rattle free drive
- No drill installation using existing mounting points
- Dimensions: 18" L x 51" W x 21" H – 2-door
- Dimensions: 36" L x 51" W x 21" H – 4-door
- Available for 2-door and 4-door models

C. CARGO AREA ENCLOSURE, DELUXE RAISED LID

Organize and secure the gear in the back of your 4-door Bronco. Sensitive items remain securely hidden from view with the top on or off.

- MOLLE grid design allows use of MOLLE storage bags for organization
- Creates a secure area when the rear vehicle door is closed and locked
- Rubber perimeter seals for a rattle free drive
- No drill installation using existing mounting points
- Dimensions: 36" L x 51" W x 21" H
- For 4-door Bronco only

B. CARGO AREA TRUNK

Lock away your emergency gear and more in this Bronco logoed steel trunk. Fits perfectly behind the back seat in a 2-door Bronco.

- Carpeted floor cushions and protects sensitive gear
- Two gas charged struts assist opening and hold lid for ease of access
- Bold Bronco logo provides unique styling
- All steel construction offers maximum security
- Dimensions: 40" L x 12" W x 13" H
- For 2-door Bronco only

D. CARGO AREA SECURITY DRAWER

No more leaning into the rear cargo area – let your gear slide out to you with a smooth sliding drawer.

- Carpeted floor and adjustable dividers help protect gear and create custom compartments
- Bold Bronco logo provides unique styling
- Heavy-duty lock system gives peace of mind when unattended
- To access jack, simply remove drawer
- Dimensions: 28.3" L x 38" W x 8" H
- For 4-door Bronco only

A. TABLE FOR SWING GATE

Turn the rear swing gate into additional space for work or play. This fold out table works seamlessly in conjunction with any of Tuffy's Bronco cargo enclosures.

- Weight bearing table is perfect for extending your outdoor adventures
- Slim design won't interfere with cargo
- Bold Bronco logo provides unique styling
- MOLLE grid design accepts MOLLE storage bags
- Available for 2-door and 4-door models



B. CARGO AREA LINERS/PROTECTORS

Protect the flooring in your cargo area with these rugged, stain-resistant trays specifically shaped to the contours of your Bronco. A raised perimeter lip helps contain spills.

- Vehicle name molded into liner, designed specifically for your vehicle
- Skid-resistant surface and backing help keep the mat and cargo in place
- Resistant to UV Rays and most chemicals
- Handsome black injection molded material complements most interior colors
- Cleans easily with soapy water
- Installs and removes easily without tools
- Available for 2-door and 4-door models



C. CARGO AREA RUG, 2-DOOR BY LUND

A smart way to protect the cargo area and keep cargo organized. Liner features molded construction that provides a stain- and moisture-resistant barrier to protect the cargo area floor.

- L-shaped Cargo-Loks help hold cargo in place
- The heavy-duty looped polyware surface offers an ideal fastening surface for velcro hooks on the underside of the thermoplastic Cargo-Loks
- Place Cargo-Loks at diagonal corners of your items to keep them from shifting
- Includes four Cargo-Loks and molded cargo liner



D. CARGO AREA RUG, 4-DOOR BY LUND

A smart way to protect the cargo area and keep cargo organized. Liner features molded construction that provides a stain- and moisture-resistant barrier to protect the cargo area floor.

- L-shaped Cargo-Loks help hold cargo in place
- The heavy-duty looped polyware surface offers an ideal fastening surface for velcro hooks on the underside of the thermoplastic Cargo-Loks
- Place Cargo-Loks at diagonal corners of your items to keep them from shifting
- Includes four Cargo-Loks and molded cargo liner



E. CARGO NET

Help keep packages and other loose items from moving around in the cargo area with this floor mounted net.

- Hooks to the D-rings on the cargo floor
- Stretches easily over bulky items, the soft braided cording helps protect painted surfaces
- Easy to install, no tools required
- Available for 2-door and 4-door models





BRONCO™

ELECTRONICS

ACCESSORY READY



FORD ACCESSORIES
accessories.ford.com

[Contents Page >](#)



A. POWERSPORTS SOUNDBAR BY JBL® HARMAN

Add legendary JBL audio performance to your Bronco. The versatile mounting system includes mounting clamps, inserts and quick release brackets for easy installation and multiple mounting options.

- High performance speaker array consists of two 4" long excursion woofers and a 2" high output tweeter per channel
- Capable of handling 100w per channel with a frequency response of 50Hz to 20kHz
- Speakers are weatherproof and splashproof with an IPx6 rating – perfect in case you get caught out in the rain
- Not compatible with B&O 10 speaker Sound System
- Available for 2-door or 4-door models

B. DASH CAMS

Dash Cams allow you to film the action while driving, and three Dash Cam bundles are available from Ford Accessories.

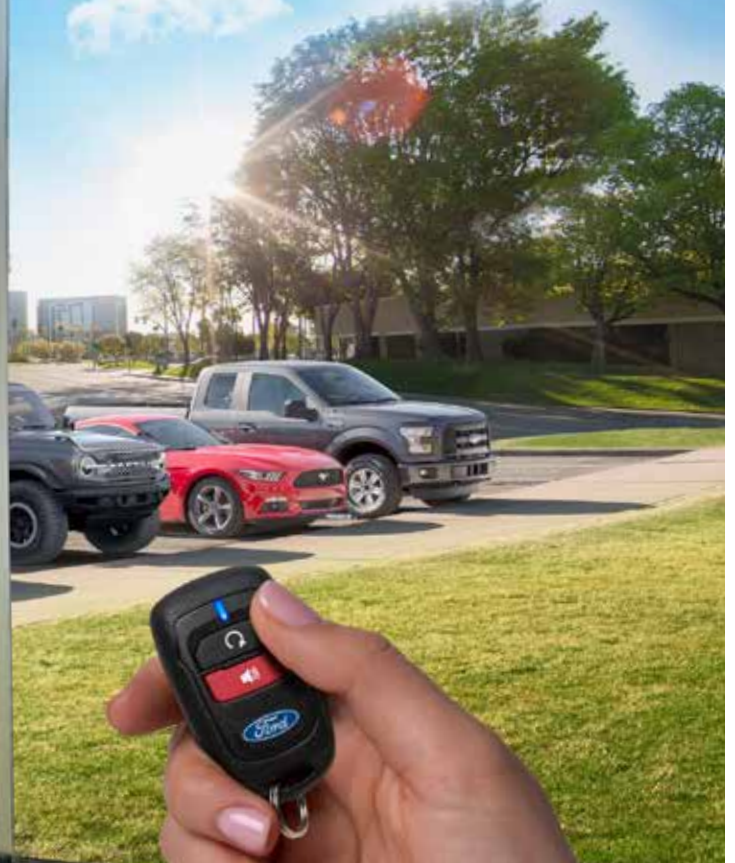
Each bundle offers:

- Full 140 degree viewing angle to help you capture the whole scene
- Wide dynamic range helps provide correct exposure and contrast
- Motion detector and impact sensor trigger the camera to record when in Parking Surveillance Mode – camera provides an alert at next power-up letting you know an incident occurred
- Configure dashcam settings with easy to use software

C. PORTABLE REAR SEAT ENTERTAINMENT

Tablet-style entertainment system features two Android tablets that can be used to show the same movie/game or can be used independently.

- Features stand-alone tablet screens equipped with Wi-Fi sharing
- T-cable routing to connect monitors to each other and allows for in-vehicle charging
- Tablets mount behind driver and/or passenger seats
- Tablets can be used outside the vehicle if desired



D. REMOTE START SYSTEMS

Add Long Range Remote Start (up to 1000') to your Ford Perimeter Plus Vehicle Security System. Long Range or Long Range with Confirmation systems available.

- Long Range Kit includes two one-button keyfobs
- Long Range with Confirmation Kit includes one 2-button keyfob and logos for keyfob
- Perimeter Plus Vehicle Security Module is required and purchased separately
- Range Extending Antenna also available to increase range up to 2500 ft.

E. KEYLESS ENTRY KEYPADS

Conveniently unlock your vehicle without your key or keyless entry remote. No wiring necessary, programmable, backlit keypad with black, textured finish.

- Kits for vehicles with factory remote start and without factory remote start available
- Mount to doors or rear tailgate for added flexibility, programming required

F. FORD PERIMETER PLUS VEHICLE SECURITY

Use your factory key fobs to arm and disarm the Ford Perimeter Plus Vehicle Security System.

- When there's impact to the glass or a body panel, the 2-stage shock sensor determines whether to issue a warning chirp or full alarm
- When activated by your Ford Dealer, the Basic Remote Start System is also included; start your vehicle from up to 300' away
- LED Warning Light Kit also available – lights up when system is activated



A. FORD PERFORMANCE BY RIGID® MIRROR-MOUNTED OFF-ROAD LIGHT KIT¹

Ford Performance worked with one of the most recognized names in Off-Road lighting, RIGID®, to develop this mirror mounted Off-Road Light Kit which works exclusively on 2021 Broncos.

- Allows for the installation of Rigid's 360-Series Lights on the Bronco's side-view mirrors
- Kit contains two 4" RIGID® 360-Series lights, unique harness, and lens covers
- Fits 2021 Bronco with Auxiliary Switches

C. UNDERBODY LIGHTS – WHITE/AMBER

These lights are mounted in the wheel well or other strategic locations to enable off-road vehicles to illuminate trails as well as difficult, rocky terrain.

- Two kits are available – with either Amber or White lights
- Each kit contains (4) RIGID® LED Rock Lights plus 15-foot leads to each light, power distribution block, switch, and light mounts

B. FORD PERFORMANCE BY RIGID® ROOF RACK MOUNTED OFF-ROAD LIGHT BAR KIT^{1,2}

Ford Performance worked with one of the most recognized names in Off-Road lighting, RIGID®, to develop this Off-Road Light Kit which works exclusively on 2021 Broncos with the factory roof rails.

- Allows for the installation of a 40" off-road light bar onto the Bronco's roof rails
- Kit contains RIGID® Radiance Plus SR-Series 40" light bar, unique harness, brackets, and lens covers
- Fits 2021 Bronco with factory roof rails and Auxiliary Switches
- LATE AVAILABILITY

D. FORD PERFORMANCE BY RIGID® ROOF MOUNTED OFF-ROAD LIGHT BAR KIT^{1,2}

Ford Performance worked with one of the most recognized names in Off-Road lighting, RIGID®, to develop this Off-Road Light Kit which works exclusively on 2021 Broncos without the factory roof rack.

- Allows for the installation of a 40" off-road light bar onto the Bronco's roof
- Kit contains RIGID® Radiance Plus SR-Series 40" light bar, unique harness, brackets, and lens covers
- Fits 2021 Bronco without factory roof rails and with Auxiliary Switches
- LATE AVAILABILITY

¹ Warning: these parts have been designed and are intended for off-highway application only. Installation on a vehicle intended for use on public roads may violate U.S., Canadian, state or provincial laws and regulations including those relating to emission requirements and motor vehicle safety standards. In addition, installation of these parts may adversely affect the warranty coverage on your vehicle. ² Prototype parts on preproduction vehicle shown. Actual product may be different.

BRONCO™

EXTERIOR



FORD ACCESSORIES
accessories.ford.com

[Contents Page >](#)



A. REMOVABLE STEEL FENDER FLARES BY BUSHWACKER

These basic yet functional Steel Fender Flares help provide protection from debris kicked-up by the tires. They're easily removed for tight off-road trails.

- Heavy-duty steel construction
- Black powder coat finish
- Includes corrosion-resistant quick-release hardware
- Not compatible with Side Steps or Front Splash Guards
- Designed to work with up to 35" tires
- Available for 2-door or 4-door models

C. EXTEND STYLE FENDER FLARES BY BUSHWACKER

Designed specifically to complement your vehicle's styling, these wide fender flares are the perfect match for oversized tires and wheels.

- Textured black flares come as a set of four
- Helps protect against dings and dents
- Made of warp-resistant Dura-Flex® 2000 ABS plastic
- No drilling required, ready to install
- Corrosion-resistant hardware
- Not compatible with Side Steps or Front Splash Guards
- Designed to work with up to 35" tires
- Available for 2-door or 4-door models

B. LARGE WHEELARCH MOLDING KIT

Pulled straight from the Sasquatch® Package, you can add these extra-large fender flares to any Bronco for added coverage for oversized tires and an aggressive appearance.

- Constructed of rugged TPO plastic
- Grained for excellent appearance, molded in black
- Installs/removes easily using simple ¼ turn fasteners
- Not compatible with Side Steps or Front Splash Guards
- Designed to work with up to 35" tires
- Available for 2-door or 4-door models

D. POCKET STYLE FENDER FLARES BY BUSHWACKER

These big, bold and brash flares finished in matte-black have the bolted-on look that says "in your face," but in reality, require no drilling for installation.

- Each flare adds about 1-1/2" of tire coverage
- Made of thick, warp-resistant Dura-Flex® 2000 ABS for durability
- Textured, matte-black finish is not meant for paint
- Edge trim and hex-head "bolts" are pre-assembled at the factory for easy installation
- Not compatible with Side Steps or Front Splash Guards
- Designed to work with up to 35" tires
- Available for 2-door or 4-door models



E



F

E. FENDER FLARES BY AIR DESIGN

Designed specifically to complement the Bronco styling, these wide Fender Flares are an excellent fit for oversized wheels and tires.

- Textured black flares come as a set of four for 2-door and 4-door models
- Helps protect against dings and dents
- Scuff resistant Satin Black finish
- Injected with lightweight and flexible polyurethane elastomer
- Ready to install, uses corrosion-resistant hardware and factory fixing clamps for easy installation
- Not compatible with Side Steps or Front Splash Guards
- Designed to work with up to 35" tires
- Available for 2-door or 4-door models

F. POCKET STYLE FENDER FLARES BY BUSHWACKER (UNPAINTED & UNASSEMBLED)

These flares feature a smooth finish that's ready for prep, primer and paint. Select any color paint to match or complement your truck's exterior.

- Smoother finish than the textured matte-black flares for a Class-A finish
- Made of thick, warp-resistant Dura-Flex® 2000 ABS for durability
- Edge trim and hex-head "bolts" are NOT pre-assembled at the factory to make it easier for prep and paint
- Simply install hardware after paint-work is complete, then install flares on the truck
- Not compatible with Side Steps or Front Splash Guards
- Designed to work with up to 35" tires
- Available for 2-door or 4-door models



4-DOOR KIT

2-DOOR KIT

G

G. STEEL FULL BODY BASH PLATES

For the serious off-roader, these bash plate kits help protect the underside of your Bronco from rocks and other obstacles you may run into on your next adventure.

- Rugged steel plates for protection
- Powder coated for corrosion resistance
- Includes all mounting hardware
- Requires OE Heavy-duty Modular Front Bumper
- 2-door kit covers the front, engine and transfer case
- 4-door kit covers the the front, engine, transfer case and fuel tank



A. HOOD SCOOP BY AIR DESIGN

Take your Bronco to the next level with the muscular look of a Hood Scoop.

- Designed to complement the retro-style of the Bronco
- Thermoformed with high impact multilayer ABS Senoplast™ polymer combined with a patented interior over-molded elastomer finish
- OE quality scuff resistant Satin Black finish
- Easy no-drill installation using 3M double-sided tape and 3M 540 adhesive

B. DOOR MOLDING KIT BY AIR DESIGN

Designed to enhance your truck's styling while helping to protect against door dings, road debris and other hazards while traversing rough terrain.

- Designed and engineered for your Bronco
- Lightweight, yet durable polyurethane construction
- Painted scuff resistant Satin Black
- Install-ready, no-drill installation using 3M double-sided tape and 3M 540 adhesive
- 2-door and 4-door kits available



C. FORD PERFORMANCE LICENSE PLATE FRAMES

High quality license plate frames allow you to dress up your vehicle without covering the state designation and registration tags on your license plate.

- Available with brushed stainless steel or black powder coat finish
- Constructed from 304 stainless steel, these frames will complement any Ford Performance fan's vehicle



D. SOFT TONNEAU COVER

Helps keep your cargo safe, clean and secure while the factory top is removed.

- Made from a thick UV resistant vinyl, this tonneau is held in place using a combination of factory hardware, straps and hook and loop fasteners ensuring your belongings stay in place

E. HEAVY-DUTY ROOF PANEL STORAGE BAGS

No better feeling than traveling down the road with the wind in your hair. Keep your mind at ease knowing that your hard top is safe at home inside a secure made to fit storage bag.

- Constructed of a thick vinyl with a soft inner liner
- Made for use in the garage, your top will be clean when you are ready to reinstall it
- Not compatible with on-vehicle storage

Three kits are offered:

- Front panels (2-door and 4-door models)
- Mid-panels (4-door models only)
- Porthole panel (2-door only)

F. HEAVY-DUTY DOOR STORAGE BAGS

When you have to leave your doors behind, help keep them clean and safe inside our storage bags.

- Constructed of a thick durable vinyl with a soft felt inner liner and foam core base
- The preinstalled foam core base helps prevent damage to the paint
- Not compatible with on-vehicle storage
- Provides a sturdy base for long or short-term storage
- Available for 2-door and 4-door models, a Rear Door Bag is also offered



A. SPARE TIRE COVERS WITH DEALER LOGO BY COVERKING

Dealers can order custom spare tire covers to help promote their dealerships!

- Available in sizes for 30", 32" and 33" tires
- Order in quantities of 24 – mix and match sizes for your inventory
- Go to broncosparetire.coverking.com to choose tire size(s) and upload your logo

B. SOFT SPARE TIRE COVERS

Add a little style while protecting your spare tire with a heavy-duty vinyl cover.

- For use with 32" diameter tires
- Compatible with Rear View Camera
- Tight fit helps minimize wind noise
- Utilizes hook and Velcro tether design for secure attachment and retention
- UV-resistant covers with rugged stitching that feature one of three available graphics:
 - Bronco 66
 - Abstract Bronco
 - Bronco TG Stamping





C



D



E

C. TRAIL ARMOR ROCKER AND DOOR SILL COVERS

Defend your Bronco with the kind of body protection that stands up to the test where the road ends. Helps protect against brush, limbs, sand, mud and just about anything else thrown up by your tires.

- Trail Armor is installed with automotive-grade high bond tape and a no-drill process
- Constructed of rugged Thermoplastic Olefin (TPO)
- Molded in black to complement your Bronco
- Not compatible with Rock Rails
- Available for 2-door and 4-door models

D. TRAIL ARMOR – FRONT CORNERS BY LUND

Help protect the front corners of your new Bronco with these Trail Armor Corner Protectors.

- Specifically designed to stand up to the wear and tear of off-roading and trail riding
- Made from tough and durable TPO thermoplastic
- OEM matte black light-textured finish
- Designed to complement the AeroSkin II Hood Protector and work with various Fender Flare styles (sold separately)
- No-drill design installs with 3M™ automotive-grade adhesive

E. TRAIL ARMOR – REAR CORNERS BY LUND

Provides ultimate protection for the rear corners of your Bronco.

- Specifically designed to stand up to the wear and tear of off-roading and trail riding
- Made from tough and durable TPO thermoplastic
- OEM matte black light-textured finish
- Designed to work with various Fender Flare styles
- No-drill design installs with 3M™ automotive-grade adhesive



A. AEROSKIN HOOD PROTECTOR

These smoke-colored protectors act like an extra skin for your hood.

- Helps provide added protection against scratches and dings
- Low-profile, aerodynamic appearance



B. TRAIL ARMOR – AEROSKIN II HOOD PROTECTOR

These black textured protectors act like an extra skin for your hood and the lip at the back of the protector helps deflect stones and debris up and over the windshield.

- Helps provide added protection against scratches and dings
- Low-profile, aerodynamic appearance
- Complements other Trail Armor accessories (shown on previous page)

C. PAINT PROTECTION PACKAGE

This paint protection film kit is extremely durable, virtually invisible and helps protect the paint from day-to-day wear and tear.

- Nearly invisible urethane film adheres directly to the vehicle
- Three-piece kit covers the leading edge of the hood and front fenders
- Helps protect the vehicle's finish from bugs and other road debris
- Helps maintain the vehicle's resale value



D. RETRACTABLE SUNRIDER® FOR HARDTOP

All-purpose, all-weather, year-round replacement for the front row overhead hard top panels.

- Replaces your overhead hard top panels with a soft top that opens and closes in seconds
- Enjoy more time in the open air
- No chance of getting caught in the rain unprepared, just flip closed
- Enjoy the open air without having to store the panels in your vehicle - use that space for adventure gear instead
- Available in premium black vinyl or twill fabrics
- Available for 2-door and 4-door models

E. RETRACTABLE TREKTOP® SOFT TOP

Run as fully-enclosed, all-season soft top or enjoy the open air with multiple open top configurations.

- Sunrider® feature allows the top to easily open from inside the vehicle for an unobstructed overhead view and open-air experience
- Innovative no zipper windows for easy removal
- Designed to work seamlessly with factory doors
- Rear tailgate opens without interference from rear window panel
- Available in premium black vinyl or twill fabrics
- Available for 2-door and 4-door models

F. SOFT MESH BIMINI SUNSHADES

Mesh fabric allows you to open up your Bronco without the effects of harsh overhead sunlight.

- Designed to work with the Trektop® soft top, factory hard top, and factory soft top (sold separately)
- Installs in just a couple of minutes
- Uses high-quality and simple hook-n-loop fastener and J-Hook system for no-drill install
- Engineered to not interfere with vehicle safety systems including side curtain air bags
- Available for 2-door and 4-door models
- Soft mesh top allows maximum airflow while providing some sun filtering benefits
- Soft mesh style is UV- and mildew-resistant



CUSTOM GRAPHICS, HOOD/SIDE STRIPE KITS BY VISCO

Three eye-catching designs available:

- A. MAP DESIGN
- B. GEOMETRIC DESIGN
- C. RETRO DESIGN

Custom graphics kits are a great way to customize any vehicle. For those wishing for an individualized look, our graphics kits are the way to go, bringing the following benefits:

- Designed for your Bronco and easy to install
- Constructed using 3M high performance graphic film
- Tested to withstand the elements so graphics look great for a long time
- Backed by our 3 year/36,000 mile warranty



D SILVER



D WHITE



D WHITE/RED

D. FORD PERFORMANCE BRONCO WINDSHIELD BANNERS

Dress up your Bronco with a Windshield Banner from Ford Performance.

- Fits 2021 Bronco
- Die-cut lettering adheres to a properly prepared windshield
- Designed specifically to follow the natural curvature of the windshield
- LATE AVAILABILITY

Three styles available:

- Silver “FORD PERFORMANCE” graphic
- White “FORD PERFORMANCE” graphic
- White/Red “FORD PERFORMANCE” graphic





A. 3D COLOR FULL VEHICLE COVER

These custom fit vehicle covers feature detailed graphics that look like the Bronco R Race Prototype Truck! Help protect your Bronco from the elements while looking good doing it.

- Special detailed graphic mimics the look of the Bronco R Race prototype
- Patterned to snugly fit the contours of the truck
- Designed for indoor use
- Specify with or without roof rack when ordering
- Available for 2-door or 4-door models

B. 2D COLOR FULL VEHICLE COVER

These heavy-duty vehicle covers help protect your Bronco from the elements while looking good doing it.

- Special graphic mimics the look of the front of the Bronco
- Patterned to snugly fit the contours of the truck
- Sewn using double needle and overlapped seams
- Specify with or without roof rack when ordering
- Available for 2-door or 4-door models

C. COCKPIT COVERS

These cockpit covers help keep the dust and dew out of the cabin when installing the roof or doors is not an option.

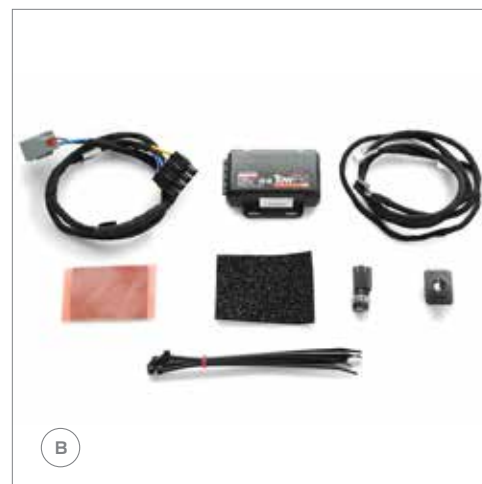
- Constructed of a lightweight yet durable, single layer Polyester fabric
- Easily stowable in almost any compact space
- Available for 2-door or 4-door models



D. FORD PERFORMANCE BRONCO TUBE DOOR KIT

The Ford Performance Bronco Tube Doors enhance the Bronco's open-air experience while still providing a sense of comfort for those who don't want to jump straight into "doors off" driving while running down their favorite trails.

- Available for 2-door and 4-door models
- These steel doors were designed and engineered by Ford to provide easy bolt on installation, allowing customers to easily swap back and forth as desired
- Attractive and rugged black powder coat finish
- LATE AVAILABILITY



A. ROCK RAILS

Help protect your rocker panels when off-roading with a set of heavy-gauge steel Rock Rails.

- Black powder coat finish provides a rugged look
- Load bearing design helps protect lower rockers and doors from damage when off-roading
- Designed to support up to 1.5 times the vehicle weight
- These are the OE rails that come standard on Black Diamond™, Badlands™ and First Edition models
- Available for 2-door or 4-door models

C. TUBE STEPS

These platform style tube steps help provide sure footing when entering or exiting the vehicle.

- Black powder-coated finish
- Includes corrosion-resistant hardware
- Utilizes factory mounting points...no drilling required
- Available for 2-door or 4-door models

B. TRAILER BRAKE CONTROLLER BY LUMEN

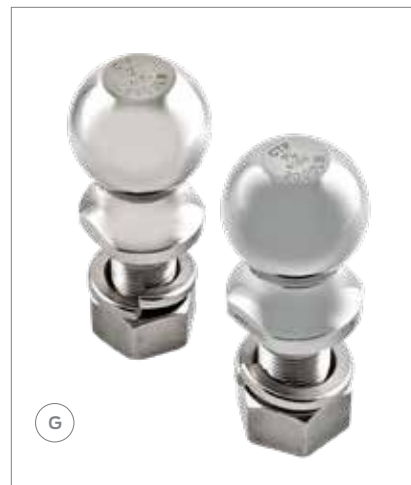
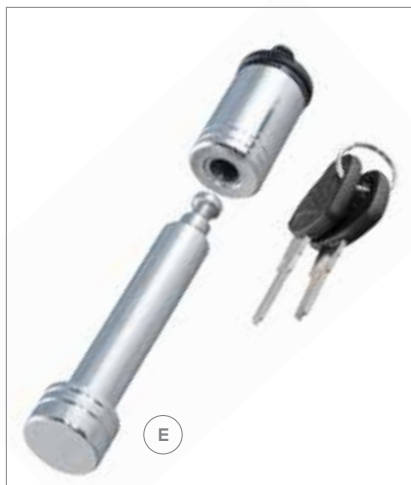
Take control of your trailer with a Trailer Brake Controller designed and Ford approved specifically for your Bronco.

- The only Ford Approved trailer brake controller compatible with all vehicle safety systems including:
 - Forward Collision Warning System
 - Automatic Emergency Braking
- Two driver selectable braking modes – proportional or user-controlled modes
- Adjustable braking force – simply rotate knob to desired intensity
- Custom ECU helps manage the truck's brake signals

D. FORD PERFORMANCE BY WARN® BRONCO WINCH KIT

The Ford Performance by WARN® Bronco Winch Kit was co-developed by Ford and WARN engineers to develop a winch solution for the 2021 Bronco that offers an OEM-level of fit, finish, durability, and vehicle integration.

- Only available on 2021 Broncos with OE Modular Front Bumper and without a front camera and without adaptive cruise control
- LATE AVAILABILITY



E. LOCKING HITCH PIN BY CURT

CURT hitch locks allow you to lock your ball mount into your trailer hitch, deterring theft and helping prevent anyone from detaching your trailer at the ball mount.

- 5/8" diameter pin fits 2" x 2" receiver tubes
- Carbon steel construction protected by a durable chrome-plated finish
- Easy-to-operate, 1/4-turn lock activation
- Watertight dust cap helps prevent internal corrosion
- Includes two keys for added convenience

H. HITCH BARS/BALL MOUNTS

Ford offers a variety of ball mounts for 2" receivers with different capacities.

- All feature a corrosion-resistant black powder coat finish
- Vehicle powertrain, suspension and other equipment all contribute to towing capacity; please check your vehicle Owner's Manual for details

F. HITCH-MOUNTED FOLDING CARGO BASKET BY CURT

Help free up space inside the vehicle for passengers and cargo with this Hitch-Mounted Cargo Basket.

- 6" tall sides help keep items more secure during travel
- Constructed from heavy-duty, tubular steel
- Folding shank allows carrier to be tilted up when not in use
- Mesh base for easy cleanup
- Built-in reflectors for improved visibility
- Protected by a highly durable E-coat and carbide black powder coat finish

I. HITCH RECEIVER CAP BY PLASTICOLOR

3D design features the bucking Bronco logo.

- Corrosion-resistant aluminum construction
- Fits 2" receivers

G. HITCH BALLS

Ford offers a variety of hitch balls with different capacities.

- Forged stainless-steel one-piece construction for maximum strength and corrosion resistance
- Vehicle powertrain, suspension and other equipment all contribute to towing capacity; please check your vehicle Owner's Manual for details

J. HITCH PLUG BY TOWING ACCESSORIES GROUP

Simple rubber Hitch Plug features the bucking Bronco logo.

- Helps keep road and other debris out of the receiver
- Fits 2" receivers



A. TIE-DOWN SHACKLE

The D-ring shackle mount is perfect for vehicle recovery or tough jobs off-road and out in the field. Features a removable, heavy-duty D-ring shackle, solid steel shank and a highly durable powder coat finish.

- Fits trailer hitches with a 2" receiver
- Can be used with most vehicle recovery straps

C. FORD PERFORMANCE OFF-ROAD RECOVERY BOARDS

These boards offer an aggressive pattern with deep cleats for maximum grip.

- Made from a specially designed polymer to offer strength and flexibility for uneven terrain
- Large hand holds make the boards easy to maneuver, even with gloves
- Sold in pairs
- Mount to your roof rack using the Recovery Track Mount by Yakima (sold separately)

B. TRAILER HITCH ASSEMBLY

This 2" Hitch Receiver assembly allows the use of hitch-mounted accessory carriers or lightweight trailers.

- Black powder coat finish and corrosion-resistant hardware for long-lasting good looks
- Original equipment hitch assembly bolts into existing holes – no drilling or welding required
- Towing capacity can be limited by vehicle powertrain; contact your Dealer for details
- Requires Trailer Hitch Wiring Harness (sold separately)

D. FORD PERFORMANCE BY WARN® RECOVERY KIT

Don't get stuck off-road without the essentials; this Ford Performance by WARN® Recovery Kit is designed to assist in the recovery of a vehicle stuck in mud, sand, or snow. This comprehensive recovery kit is sure to complement your off-road adventure in any 4x4 vehicle. Kit is for use with winches up to 10,000 lb. capacities. Kit includes:

- "Ford Performance by WARN®" storage bag
- "Ford Performance" 2" x 22' blue recovery strap-rated to 14,400 lbs.
- "Ford" branded winching gloves – size XL
- WARN® 3/4" D-Shackle
- Instruction manual

E. FORD PERFORMANCE BY WARN® HEAVY-DUTY RECOVERY KIT

Don't get stuck off-road without the essentials; this heavy-duty, Ford Performance by WARN® Recovery Kit is designed to assist in the recovery of a vehicle stuck in mud, sand, or snow. This comprehensive recovery kit is sure to complement your off-road adventure in any 4x4 vehicle. Kit is for use with winches up to 12,000 lb. capacities. Kit includes:

- "Ford Performance by WARN® Industries" storage bag/tote
- "Ford Performance" 3" x 30' recovery strap-rated to 21,600 lbs.
- Tree trunk protector, 4" x 8' rated to 30,000 lbs.
- Heavy-duty Snatch Block with greaseable port for winch capacities up to 12,000 lbs.
- "Ford" branded winching gloves – size XL
- Two WARN® 3/4" D-Shackles
- Instruction manual



FORD PERFORMANCE PARTS

FORD PERFORMANCE PARTS FOR BRONCO

Ford Performance will help you gear up for your next off-road adventure. The Ford Performance Team is developing a high-performance lineup from gear sets and installation kits, differentials, driveshafts, and covers to complete bolt-in front drive units and rear axles. Upgrade your base Bronco to Sasquatch specs and beyond. Please log into performanceparts.ford.com for the latest in performance Bronco drivetrain parts.



F. FORD PERFORMANCE OFF-ROAD SUSPENSION KITS

Ford Performance Off-Road Suspensions provide a comfortable on-road ride and increased off-road performance in even the toughest conditions.

- Available for 2-door and 4-door models
- Optimized suspension upgrade to 2021 Bronco Base, Big Bend™, Black Diamond™, and Outer Banks™ Trim series
- Available early 2022



G. 2.3L SPORT MUFFLER

Uniquely designed and tuned to provide optimum performance, aggressive sound, durability and pure driving excitement.

- Fits 2021 Bronco 2.3L EcoBoost®
- Manufactured in the USA from high-quality 304 stainless steel
- Features ultra-smooth mandrel bends, warp-free flanges and superior craftsmanship
- 3.5" Chrome-plated or Black Chrome-plated stainless-steel tips
- Uses stock hangers and mounts
- Note: Departure angle may be reduced with installation

H. 2.7L SPORT MUFFLER

Uniquely designed and tuned to provide optimum performance, aggressive sound, durability and pure driving excitement.

- Fits 2021 Bronco 2.7L EcoBoost®
- Manufactured in the USA from high-quality 304 stainless steel
- Features ultra-smooth mandrel bends, warp-free flanges and superior craftsmanship
- 3.5" Chrome-plated or Black Chrome-plated stainless-steel tips
- Uses stock hangers and mounts
- Note: Departure angle may be reduced with installation



A. MOLDED SPLASH GUARDS

Help protect the sides of your Bronco from all kinds of dirt and debris with a set of Molded Splash Guards.

- Deflect mud, snow and ice away from lower body panels
- Contoured design complements vehicle lines and gives excellent protection
- Heavy-duty black plastic construction resists cracking
- Not compatible with Rock Rails
- Available in pairs for front or rear

C. HEAVY-DUTY ROOFTOP TENT BY THULE

A year-round, 2-person tent built to endure the elements of any season and nearly any climate.

- Tent fabric is both UV- and mold-resistant
- Mesh panels offer plenty of ventilation and open for more airflow
- Four, large internal pockets for storing gear and camping accessories
- Includes a 96" x 56" high-density foam mattress for added comfort
- Requires THULE crossbars (sold separately)

B. SPORTZTENT

No need to unpack – simply keep all your gear in your vehicle and sleep in the tent. Roomy 9' x 9' tent sleeps 4 to 6 people.

- Steel and fiberglass pole structure is easy for one person to set up
- Full length tape seamed, rainfly with a 6' x 6' awning for shade

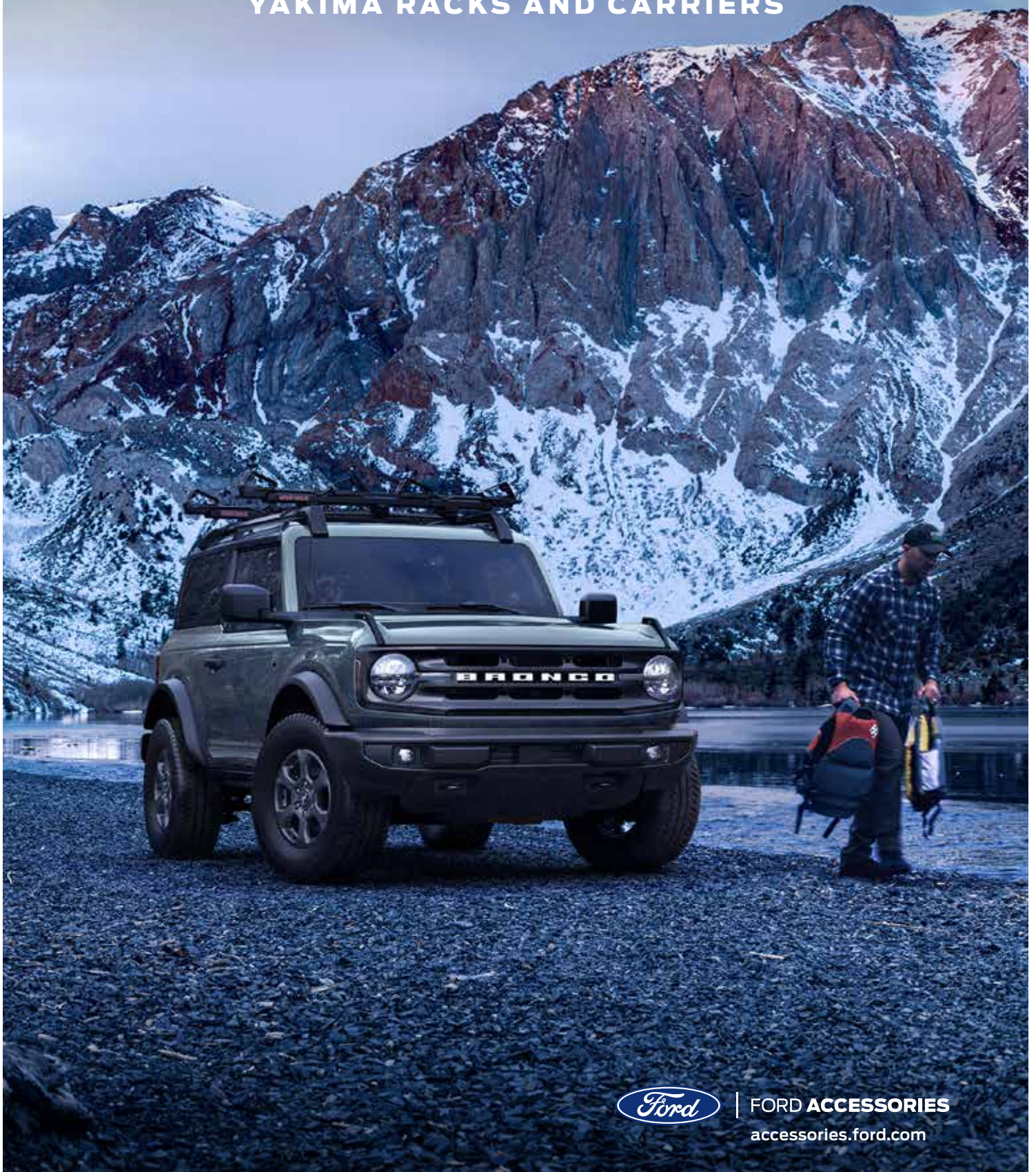
D. HEAVY-DUTY ROOFTOP TENT BY YAKIMA

This four-season-rated, 2-person Heavy-Duty Tent provides the ultimate mobile base camp for any season. Features a waterproof PU coating and a weather-shedding water-resistant rainfly.

- Doors, windows and skylights have solid and mesh panels that zip open for ventilation
- Thick, 2.5" wall-to-wall foam mattress includes a removable cover for easy cleaning
- Integrated locks included for added security
- Requires Yakima crossbars (sold separately)

BRONCO™

YAKIMA RACKS AND CARRIERS



FORD ACCESSORIES
accessories.ford.com

[Contents Page >](#)



A



B



C



D



E

A. BIKE CARRIER, ROOF MOUNTED WITH LOCK, PREMIUM BY YAKIMA

Our newest premium upright bike carrier loads a variety of bikes quickly and easily.

- The carrier secures the bike by the wheels for ultimate bike protection
- The low-profile design minimizes rear door interference
- Fits 26" to 29" wheels and tires from 23mm to 4.0" with no adjustment needed

B. OE CROSSBAR KIT

This single crossbar is an add-on to the factory rack.

- Can be mounted in one of two locations
- Helps provide extra support for those longer items

C. CROSSBARS BY YAKIMA

Select Yakima roof-rack carriers require the t-slot feature or added capacity these Crossbars provide.

- Provides the extra stability required when deploying roof-mounted tents
- T-slots accommodate Eye Bolts, Load Stops and other Yakima Rack accessories
- Extra-long crossbars allow mounting of multiple Yakima carriers, check your vehicle's Owner's Guide for roof-rack carrying capacity

D. RETRACTABLE AWNING

This Awning helps provide excellent protection from the sun or a sudden shower. It mounts easily to the side of your base rack and only takes up six inches of bar space. Just pull it out window-shade style and insert the poles when you get to camp.

- Fits Yakima or OE roof racks
- Easy to pitch – just pull it out, prop it up and settle in

E. RACK MOUNTED BIKE CARRIER

Securely carries one bike. For use with Yakima or OE crossbars, it can be paired up with other Yakima carriers for maximum cargo-carrying flexibility.

- Zero contact with frame to help protect carbon fiber and custom paint jobs
- Accommodates disc brakes, thru axles, and full suspension bikes



F. CANOE CARRIER

This Canoe Carrier attaches directly to any Yakima or O.E. roof rack. The unique design attaches to round, square and factory bars with a single tightening knob.

- Includes straps and bow/stern tie-downs – everything needed for a single canoe
- Durable molded rubber cushions the canoe gunwale while providing stability

H. KAYAK CARRIER WITH LOAD ASSIST

Handles both kayaks and SUPs, the lightweight mount tilts down more than two feet from the roof rack and helps gently raise it up to the top of the vehicle.

- Requires Yakima HD Crossbars
- 80 lb. capacity easily handles a large kayak or two boards
- Felt-covered cradles flex to conform to hull for secure transport, tie down straps included

G. KAYAK CARRIER

With multiple settings, the Kayak Carrier allows you to carry one boat in J-Cradle position or two boats in vertical, stacker position, plus it folds flat when not in use.

- Fully assembled out of the box, tool-free installation
- Fits Yakima or O.E. crossbars

I. STAND-UP PADDLEBOARD (SUP) CARRIER

Holds two SUPs up to 36" wide. The Paddleboard Carrier is fully assembled out-of-the-box, features integrated rollers for easy loading and includes SKS locks.

- Includes everything needed to carry up to 2 SUPs
- Fits Yakima or O.E. crossbars
- Shown with Paddle Holder – sold separately



A. RACK-MOUNTED BASKET – SMALL

This narrow basket is built from rugged, weather-resistant steel. This is a sleek, load-and-go option for any multisport rooftop system. Use it to haul coolers, backpacks, duffel bags or even golf clubs.

- Weather-resistant, heavy-duty steel construction for years of rugged use
- Narrow profile leaves room on bars for bikes, boats or boards
- Easy to mount and remove – no tools required
- Custom fairing included for reduced drag and wind noise

B. RACK-MOUNTED BASKET – MEDIUM

Built to haul coolers, duffels, camping gear and more, the quick-release mounting system makes it super simple to install. Plus, it includes adjustable accessory bars for adding Yakima gear mounts to carry bikes, boats and boards on top.

- Medium sized cargo basket with a clean, modern design
- Tool-free mounting hardware for easy install right out of the box
- Integrated fairing reduces wind noise and drag
- Made from strong, durable steel for years of rugged use

C. RACK-MOUNTED BASKET – EXTRA-LARGE

Featuring heavy-duty construction and a wide body, the Extra-Large Cargo Basket fits just about any gear you can pack into it.

- Quick installation and minimal assembly required
- Weather-resistant heavy-duty steel construction
- Custom wind fairing included for extra noise reduction
- Minimum Crossbar Spread: 30"
- Maximum Crossbar Spread: 38"

D. XL BASKET LIGHT BRACKETS

These brackets come in pairs and mount to the XL Cargo Basket for adding extra off-road lights for your off-road excursions.

- Heavy-duty powder coated steel construction
- For mounting off-road lights (sold separately) of nearly any size or shape

E. CARGO BOX

Carry your gear on the roof with this sleek Cargo Box. The aesthetically-pleasing shape also contributes to minimized wind noise.

- Dual-sided opening for easy access on either side of your vehicle
- Big 16 cu. ft. capacity hauls gear for up to 3 campers; fits snowboards and skis up to 185cm
- Integrated Same Key System (SKS) locks are built-in for added security



F. SMALL AND LARGE ROOF PLATFORM RACKS

These Roof Platform Racks feature engineered aluminum construction and a textured black powder coat finish for durability. Two platform sizes to meet most carrying needs.

- Small platform attaches to cross bars (sold separately); large platform mounts directly to the factory Roof Rails
- Side-to-side slats act like crossbars for mounting most bike, kayak, ski mounts and more
- Integrated T-slots for simple and secure attachment of T-slot accessories (sold separately)

H. CORNER BRACKETS

Heavy-duty adjustable brackets help secure most hard-shelled containers like coolers, storage bins or toolboxes to your Roof Platform Rack (sold separately).

- Drop-in style T-slot eye bolts make them easy to install and adjust
- Heavy-duty stamped-steel construction, with a durable black-zinc coating

G. PERIMETER FENCE

Add to the utility of your Roof Platform Rack (sold separately) with a set of versatile, heavy-duty aluminum perimeter rails to help secure and tie down your load.

- Two sizes available for either the Small or Large Platform Rack
- Integrated T-slots make it easy to attach other Yakima T-slot accessories
- Set of four (front, back and both sides)

I. JERRY CAN HOLDER

Carry extra fuel or water on the Roof Platform Rack (sold separately) with this Jerry Can Holder. Holds one full 10L or 20L metal or plastic jerry can (not included).

- Includes heavy-duty hook straps with steel ratchets, cast steel eyelets and a durable black zinc coating



A. TOOL/JACK HOLDER

This heavy-duty bracket keeps most common jacks (not included) easily accessible, integrated lock loop allows the addition of a padlock for greater security.

- Securely carries 1 high-lift jack with a 50 mm steel standard bar up to 35 lbs
- Heavy-duty stamped steel construction, with a durable black-zinc coating

C. ROTOPAX™ MOUNTING KIT

Adapts the Rotopax™ mounting system for Yakima HD Crossbars or Platform Racks.

- Now you can attach up to 40 lbs. of Rotopax™ water and fuel packs (sold separately)

B. LIGHT BAR ATTACHMENT KIT

Easily secure a light bar or a pair of spotlights on the Roof Platform Rack. Configurable in 16 different orientations for maximum versatility.

- Supports up to an 18-lb. light bar or a pair of 9-lb. spotlights
- Heavy-duty steel construction, with a durable black-zinc coating

D. RECOVERY BOARD MOUNT

A smart, quick, secure way to keep Recovery Boards (sold separately) on hand and within reach.

- Holds a pair of our Recovery Boards from Ford Performance



E. HITCH EXTENSION BY YAKIMA

Don't let the spare tire get in the way of your hitch-mount bike carrier.

- Extends your 2" hitch receiver by 7 1/4"
- Secures to any 2" hitch receiver using a threaded pin
- Heavy-duty steel construction

F. ROOFTOP FISHING ROD BOX

Purpose-built, enclosed fishing rod box carries up to 8 fishing rods, up to 8 ft. long with room for low-profile tackle boxes or other gear.

- Side opening for easy access to rigged-up fishing rods
- Protective foam pads – designed with individual rod slots
- Drain holes help prevent water from pooling in bottom of the box

G. ROOFTOP FISHING ROD MOUNT

Securely carry up to 8 full-length fishing rods of just about any style on the roof rack – instead of in the vehicle. It's the easy way to transport your rods fully rigged-up and ready to fish.

- The single-button side access makes for quick loading/unloading
- Integrated locks help provide added security

H. SKI/SNOWBOARD CARRIER

Wide enough to carry six pairs of skis – up to 136mm at the tip – or four snowboards. Integrated SKS (Same Key System) locks are built in for added security.

- Delivers a quiet ride and streamlined good looks
- Works with Yakima or O.E. crossbars
- Large button makes it easy to open with gloves or mittens on

I. HITCH MOUNT BIKE CARRIER*

This Tilt, Tray-Style Carrier holds 2 bikes, securing them at the wheels, protecting carbon fiber and painted surfaces.

- Tilts for access to the cargo area
- Accommodates most bikes with 20"- 29" wheels and up to 4.8" wide tires
- Requires Hitch Extension to provide spare tire clearance (sold separately)

* This aftermarket Ford Licensed Accessory is for customer installation only. Ford does not authorize this accessory for installation on a new motor vehicle prior to its first retail sale and Ford does not authorize this accessory for any commercial installation by a dealer or other commercial entity. It must be sold to the customer in a transaction separate from a new car purchase, and it may not be financed in connection with the sale of a new motor vehicle.



A. EYE BOLTS

These Eye Bolts integrate seamlessly with most T-slot crossbars, to create instant tie-down points for securing gear. They're secure, strong and easy to install — just drop them into the slot and twist into place.

- Rugged steel construction with durable black corrosion resistant finish for many years of use
- Includes hardware for both HD Crossbar and standard T-slot crossbars
- Also work with our Large or Small Platform Racks
- Set of two

C. LOAD STOPS

Built with the strength to keep heavy loads in place, our steel, T-slot Load Stops integrate with T-slot crossbars or Platform Racks. Load Stops quickly install into T-slots and adjust with the turn of a knob.

- Simple, tool free adjustment is done with the turn of a knob
- Built in tie-down points make it easy to secure gear
- Set of four

B. HEAVY-DUTY HOOK STRAPS

Heavy-Duty Hook Straps deliver maximum strength with a proven hook attachment to easily hold larger cargo in place. Designed to work with Yakima Eye Bolts and integrated attachment points on our Platform Racks. These straps are quick and easy to adjust – load and go!

- Proven Heavy-Duty Straps with durable, vinyl-coated hooks
- Easily attach to our Eye Bolts, or other tie-down points, for a secure hold
- 10-ft. length handles a wide range of gear and supplies
- Set of two

D. SKS LOCKS

These 4 Same Key System (SKS) lock cores enable you to lock your Yakima products with just one key.

- Fits all lockable Yakima Rack & Carrier accessories
- Includes 4 SKS Cores and matching keys
- 4 keys included plus a control key
- Core numbers included in prepackaged locks cannot be specified

BRONCO™

THULE RACKS AND CARRIERS



FORD ACCESSORIES
accessories.ford.com



A. CROSSBARS BY THULE

Designed specifically for THULE roof rack carriers.

- Aero design helps minimize wind noise.
- Extra-long crossbars allow mounting of multiple THULE carriers, check your vehicle's Owner's Guide for roof-rack carrying capacity

B. RACK MOUNTED BIKE CARRIER

Rock-solid upright bike carrier.

- Easy to use frame clamp design, self-adjusting jaws automatically adjust to the downtube
- Fits bike frames up to 3-3/8" in diameter and tires up to 2-1/2" wide
- Each carrier holds one bike

C. CARGO BASKET WITH CARGO NET

Add roof-mounted cargo capacity.

- Stylish and functional low-profile design with tapered side walls
- The included wind fairing helps smooth the airflow over your cargo
- Durable shock cord mesh netting stretches to conform to cargo

D. CARGO BOXES

Maximum capacity boxes have room for plenty of extra gear.

- Dual-side opening for easy loading/unloading from either side of the vehicle
- SecureLock™ helps ensure that all gear is locked and box is properly closed prior to driving
- Three sizes available to fit your cargo carrying needs:
 - X-large: 83" x 34" x 17"
 - Large: 75" x 33" x 18"
 - Small: 54" x 25" x 15.5"



E. CANOE CARRIER

Easy-to-load, secure rack for canoes.

- Cushioned weather-resistant base padding protects canoe during transit
- Strong, durable load straps with buckle bumpers protect vehicle and canoe from scratches
- Easy to secure canoe during transport with included ratcheting tie-downs

G. FOLDING KAYAK CARRIER

The Folding Kayak Carrier folds down when not in use for increased overhead clearance.

- Includes ratcheting straps and bow and stern tie downs
- Wide mouth J-profile offers easy loading/unloading

F. FLAT KAYAK CARRIER

The Flat Kayak Carrier features form-fitting saddles for lateral stability.

- Includes ratcheting straps and bow & stern tie downs
- Rear-mounted Hydro-Glide felt lined saddles provide low friction loading/unloading

H. STAND-UP PADDLEBOARD (SUP) CARRIER

This premier locking Stand-Up Paddleboard (SUP) Carrier delivers unmatched board security combined with a convenient, universal mounting design.

- Exclusive, telescoping design delivers a custom fit for board widths up to 34" wide
- Heavy-duty, steel reinforced webbing and spring-loaded locking cam provide unsurpassed security for your boards
- Soft, weather resistant padding protects boards during transit



A. HITCH-MOUNTED LIGHTWEIGHT BIKE CARRIER*

This super lightweight bike carrier features aluminum construction contributing to easy installation, removal and handling. Carries up to two bikes.

- 7 Inch spacing between bikes with integrated anti-sway that helps prevent bike to bike contact
- Convenient access to rear of vehicle – rack is easily tilted down
- Includes integrated cable lock
- Quick, secure and confidence-inspiring bike attachment with ratchet cradle strap
- Easily fold down bike arms when not in use
- Compact cradle design accommodates wide variety of bike sizes/frame styles
- Requires THULE Hitch Extension (shown below and sold separately)



THULE Hitch Extension



B. RACK MOUNTED SKI/SNOWBOARD CARRIER

Premium locking ski and snowboard carrier features ultra-soft rubber arms and oversized buttons for maximum protection and easy access.

- Holds up to 6 pairs of skis or 4 snowboards securely
- Easy to open/close while wearing gloves with oversized push buttons
- Includes locks to lock the skis in the carrier and the carrier to the vehicle

*This aftermarket Ford Licensed Accessory is for customer installation only. Ford does not authorize this accessory for installation on a new motor vehicle prior to its first retail sale and Ford does not authorize this accessory for any commercial installation by a dealer or other commercial entity. It must be sold to the customer in a transaction separate from a new car purchase, and it may not be financed in connection with the sale of a new motor vehicle.

BRONCO™

INTERIOR ACCESSORIES



FORD ACCESSORIES
accessories.ford.com

[Contents Page >](#)



A. SMOKER'S PACK WITH LIGHTER

Add an ash cup and lighter to your vehicle.

- The ash cup/coin holder is designed to fit in cup holders and includes a lid to keep ashes or spare change in place
- Ash Cup is constructed of a durable thermoplastic and removes easily for cleaning
- Lighter assembly mounts in place of the power point

B. SMOKER'S PACK WITHOUT LIGHTER

Add an ash cup/coin holder to your vehicle.

- The ash cup/coin holder is designed to fit in cup holders and includes a lid to keep ashes or spare change in place
- Ash Cup is constructed of a durable thermoplastic and removes easily for cleaning

C. CARGO ORGANIZER – REAR, SUNVISOR ORGANIZER, OWNER'S MANUAL, KEY FOB COVER, KEY COVER

Travel in Bronco style with this set of Bronco logoed accessories. Kit includes:

- Foldable 2 divider rear cargo organizer
- Sunvisor organizer with MOLLE PAL straps
- Owner's Guide cover
- Leather key fob and key covers

D. CARGO ORGANIZER KIT – REAR, SUNVISOR ORGANIZER

Contain your small items with this Bronco logoed Cargo Organizer Kit that includes:

- Foldable 2 divider rear cargo organizer
- Sunvisor organizer with MOLLE PAL straps

E. CONSOLE VAULT

Keep your valuables discreetly hidden and secure with a vehicle safe concealed inside the console.

- 12 gauge cold-rolled steel plate construction
- Locking system helps deter unauthorized entry

F. CONSOLE VAULT, REAR CARGO AREA

Keep your valuables discreetly hidden and secure with this vehicle safe concealed under the rear cargo area.

- 12 gauge cold-rolled steel plate construction
- Combination lock system



G. FORD PERFORMANCE BY ARB ZERO SINGLE ZONE FRIDGE

The perfect fridge/freezer for a couple or a small family heading on a long weekend away. Featuring a front opening lid unique to the 47qt model.

- Features front/rear DC power inlets to allow you greater freedom for mounting
- AC Power cord also included for in home use
- 5v outlet to charge USB powered devices
- Downloadable App to monitor or control the fridge via Bluetooth
- External Dimensions – (L) 29" x (W) 19" x (H) 22"

J. MOLLE STRAPS (6 STRAPS), BY TUFFY

This set of 6 MOLLE Straps allows you to strap different objects on MOLLE panels.

- Kit includes three 8" and three 12" straps for different sized objects



H. PORTABLE MINI-FRIDGE

No ice needed on your next adventure! Use as a fridge or freezer to help things keep their cool.

- 19 qt. capacity – refrigerate or freeze to -4 degrees F
- Electronic thermostat and the energy-smart compressor helps minimize power consumption
- Internal LED light
- Includes 4 ft. 12v DC power cord and handy carrying strap



K. MOLLE BAGS

Modular Lightweight Load-carrying Equipment (MOLLE) Bags help conveniently contain your gear. Set of six pouches of varying sizes and shapes including:

- 11" x 9.5" • 3" x 3" • 4.5" x 2"
- 9.5" x 11" • 6" x 6" • 7.5" x 4.5"
- Attaches to the PAL strapping system on the back of the vehicle's seats (Black Diamond or Badlands) or use with the MOLLE Grate System (sold separately)



I. SOFT CARGO ORGANIZER (LARGE)

This large, soft-sided organizer folds out of the way when not in use and stands up when duty calls. Sized to hold our Soft-Sided Cooler Bag.

- Cleans easily, and stores flat if desired
- Measures a generous 39" wide x 14" long x 10 3/4" high



L. MOLLE GRATE SYSTEM FOR SWING GATE

This tailgate panel and storage system are a simple way to consolidate a lot of small tools, parts and accessories into a manageable and clean space.

- MOLLE paneling allows this grate system to be customized to fit any adventure
- MOLLE Bags shown are sold separately



A. SOFT-SIDED COOLER BAG WITH ADJUSTABLE STRAPS

Padded cooler helps keep refrigerated foods and beverages chilled or heated ones warm.

- The interior is insulated with an aluminum film that quickly wipes clean and is water resistant
- Lightweight and collapsible with a zippered top
- Measures 14" x 13" x 10 3/4"

B. SOFT CARGO ORGANIZER (STANDARD)

This smart mix-and-match way to contain personal belongings can help minimize spills, bag is collapsible and stores flat.

- 3 mildew-resistant compartments and built-in handles; just over 2' wide
- Cleans easily and stores flat if desired

C. PET BARRIER

Mounts between the front bucket seats and helps keep your pet from jumping into the front seat.

- Mesh design with adjustable straps
- Complies with FMVSS Flammability requirements
- Features the Ford Oval logo

D. PET HARNESSSES

Available in five different sizes, our Pet Harnesses help keep pets of almost any size restrained in case of a crash or sudden maneuver.

- Quick and easy to put on and take off – harness attaches to seatbelt
- Designed with input from a veterinary orthopedic surgeon & design engineer
- Any stress will be placed on the chest instead of the neck of your pet

E. PET KENNEL

This portable soft-sided Pet Kennel helps keep your pet contained inside or outside the vehicle.

- Attaches to the D-rings in the cargo area
- Constructed of tough polyester & mesh screens over a metal tube frame
- Side pockets for leash, water bottle, collapsible bowl, etc.
- Folds flat when not in use



F. WINDSHIELD SUNSCREEN

Park your vehicle outside? A UVS100® Custom Sunscreen from Ford Licensed Accessories can help reduce the temperature inside the vehicle and help protect the interior from damaging UV rays.

- Custom fit to your vehicle
- Reflective outer layer
- Helps shade steering wheels and seats
- Helps reduce fading of interior

H. DOOR SILL PLATES – STAINLESS STEEL

Help protect door sills from scrapes and scratches with these attractive bright stainless steel Door Sill Plates.

- Laser-etched with the Bronco logo to enhance appearance
- Premium-grade 304 stainless steel construction
- Bright stainless steel finish for a classic look
- Available for 2-Door or 4-Door models



G. DOOR SILL PLATES – BLACK PLATINUM

Help protect door sills from scrapes and scratches with these attractive Door Sill Plates.

- Laser-etched with the Bronco logo to enhance appearance
- Premium-grade 304 stainless steel construction
- Black Platinum finish complements most colors
- Available for 2-Door or 4-Door models

I. FLOOR LINER ALL-WEATHER FLOOR MATS

Helps provide maximum protection from spills, dirt and grime. These Premium Floor Liners help collect the mess so your floor covering doesn't have to!

- Unique Floor Liners available for either carpeted or vinyl flooring
- Constructed of durable, pliable molded Thermoplastic Elastomer (TPE) for long life
- Easy to clean, simply remove from vehicle and wash with soapy water
- 4-piece kit for front and rear, black
- Available for 2-Door and 4-Door models



A. HEADLINER KITS

Dress up your interior and help improve sound deadening with these precision fitting headliner kits.

- Molded carpet is formed to the factory hardtop
- Enhances the look of your interior
- 3-piece kit is available for 2-door models w/o porthole
- 5-piece kit is available for 2-door models with porthole
- 4-piece kit is available for 4-door models

B. BRONCO FIRST AID KIT

First Aid Kit keeps supplies in a compact, fire-retardant case. Kit includes:

- Custom-molded case with Bronco Logo
- Assorted bandages, gauze and adhesive tape
- Emergency survival blanket
- Latex-free gloves
- Scissors and tweezers and much more

C. BRONCO ON-ROAD ASSISTANCE KIT

Bundled in a handy fire-retardant case, our On-Road Assistance Kit contains many items to help make you prepared for nearly any roadside emergency. Kit includes:

- Handy, soft carrying case with Bronco Logo
- Booster cables and warning triangle
- Reflective safety vest, rain poncho and survival blanket
- Assorted tools, lights, tape and towels
- First aid kit w/assorted bandages, and much more

D. BRONCO OFF-ROAD ASSISTANCE KIT

Bundled in a handy stylized backpack with reflective Bronco logo, our Off-Road Assistance Kit contains many items to help make you prepared for nearly any off-road emergency. Kit includes:

- Carrying case that can be used as a backpack for hiking or carrying items
- Fire extinguisher, fold-up shovel & 12-in-1 multi-tool
- 125ml of emergency water, camelback water reservoir and survival blanket
- First aid kit w/assorted bandages and much more

E. NOCO JUMP STARTERS

These portable lithium-ion jump starter packs deliver the power to jump start a dead battery in seconds or work as a portable power source for recharging USB devices. Handy, product-specific carrying cases also available (sold separately).

- Patented technology provides spark-proof connections and reverse polarity protection
- Bright, LED flashlight with multiple modes, including SOS
- Four power levels available:
 - GB40: 1000 amps
 - GB50: 1500 amps
 - GB70: 2000 amps
 - GB150: 3000 amps



F. NEOPRENE SEAT COVERS BY COVERKING®

These covers are water and mildew resistant. Each cover features a soft and cushioned feel with a sporty design.

- Made using two layers of material – an inner layer of waterproof Neoprene covered by a water-resistant Neotex outer shell
- Custom-fit for a sleek interior look
- All seat functions preserved including seat controls and airbags
- Two styles of front covers available: with or without MOLLE straps on the back
- Two styles available for rear seats depending on seat configuration
- Different kits for 2-door or 4-door models

G. CARHARTT® SEAT COVERS BY COVERCRAFT

These custom-patterned seat covers are easy to install and feature heavy-duty Carhartt® Gravel Duck Weave fabric and triple stitched main seams.

- Features the Carhartt® logo sewn into the seat backs
- Includes headrest covers and features cutouts for seat controls
- Available for front and rear (sold separately)
- Machine washable
- Different kits for 2-door or 4-door models



A. 2021 BRONCO/RANGER BLACK LUG NUT – VEHICLE KIT

Ford Performance Parts Black Bronco/Ranger Lug Nuts offer a durable black chrome finish that provide the perfect look to enhance your vehicle.

- Fits M12 x 1.5-wheel stud
- Vehicle Kit contains 24 lug nuts (6 lug nut single wheel kit also available)
- Fits 2021 Bronco and 2019-2021 Ranger
- NOTE: Hand installation and removal with non-marring lug nut sockets is strongly recommended to prevent surface damage to the black lug nuts

B. WHEEL LOCK KIT

Help prevent wheel and tire theft on your vehicle with these good-looking, chrome-plated Wheel Locks. Use them to replace one lug nut on each wheel (including the spare) as a welcome measure of security for your vehicle.

- Chrome-plated locks available to replace exposed lugs
- Kit includes 5 locks and a key

C. FORD PERFORMANCE OFF-ROAD/TRACK AIR COMPRESSOR KIT BY ARB

This portable kit includes a 19-foot air hose, battery clamps, and an ARB air chuck with quick press fitting – all in a durable carrying case.

- Sealed for moisture and dust resistance
- Hard-anodized cylinder bore
- Teflon-impregnated carbon fiber piston seal
- Over-pressure safety valve equipped
- Motor is internally thermal protected against extreme temperature damage
- Heavy-duty MAXI fuse equipped for inline circuit protection

Specifications:

- Max Flow 2.65 C.F.M.
- Max Amp Draw: 22.9 Amps
- Max 50% Duty Cycle
- Includes Carrying Case, Air Line and Accessories
- Alligator Clip Battery Connections





D. FORD PERFORMANCE BEAD LOCK WHEEL TRIM RING KITS

Bronco Bead Lock Trim Rings provide an easy way to customize your Bronco and give your bead-lock wheels a unique and awesome look!

- Fits 2021 Bronco with the factory bead-lock wheels
- Each kit includes five trim rings
- Easy installation
- These Trim Ring Kits are for cosmetic purposes
- Available in Orange, Red and Silver powder coated finishes



E. 18" BLACK MACHINED FACE WHEELS, SET OF 5

Designed and engineered to complement the new Bronco's athletic appearance.

- Tested to original equipment standards for corrosion resistance
- Set of 5, includes TPMS sensors, center caps and lug nuts





LIMITED WARRANTY INFORMATION FOR FORD ORIGINAL ACCESSORIES

Ford Original Accessories will be warranted for whichever provides you the greatest benefit: 24 months/unlimited mileage, or the remainder of your Bumper-to-Bumper 3-year/36,000-mile New Vehicle Limited Warranty.

FORD LICENSED ACCESSORIES (FLA) ARE WARRANTED BY THE ACCESSORY MANUFACTURER'S WARRANTY

FLA are designed and developed by the accessory manufacturer and have not been designed or tested to Ford Motor Company engineering requirements. FLA will be warranted by the accessory manufacturer for whichever provides you with the greatest benefit: 24 months/unlimited mileage or the remainder of your Bumper-to-Bumper 3-year/36,000-mile New Vehicle Limited Warranty if bought at time of vehicle sale.

FORD PERFORMANCE PARTS WARRANTIES

Check the Ford Performance Parts website: www.performanceparts.ford.com for the latest limited warranty information on specific products. Contact your Ford Dealer for details and/or a copy of all limited warranties.

OWNER'S GUIDE

Always refer to the Owner's Guide to determine roof rack capacities and towing capabilities.

Information and images contained in this publication were correct at the time of printing, changes in offerings, descriptions and availability may have occurred. Some vehicle representations shown with optional equipment. Colors are representative only. Ford reserves the right to change product specifications at any time without incurring obligations.

Images are a mix of preproduction CGI and actual images. Many images include props that are not included. Recreation equipment not included. Some accessories may be shown on Ford vehicles other than Bronco.

THULE is a registered trademark of Thule Sweden AB. AeroSkin is a registered trademark of Lund, Inc. Yakima is a registered trademark of Yakima Products, Gatorback is a registered trademark of Truck Hardware Ltd. Carhartt is a registered trademark of Carhartt, Inc. Coverking is a registered trademark of Coverking, Inc. ARB is a registered trademark of ARB Industries, Ltd. All other trademarks, service marks, images and logos are property of their respective owners. All rights reserved.



FORD ACCESSORIES
accessories.ford.com

April, 2021 ABT-4697
© 2021, Ford Motor Company