

FT22122102-02

TRAIL SIGHT LIGHTS

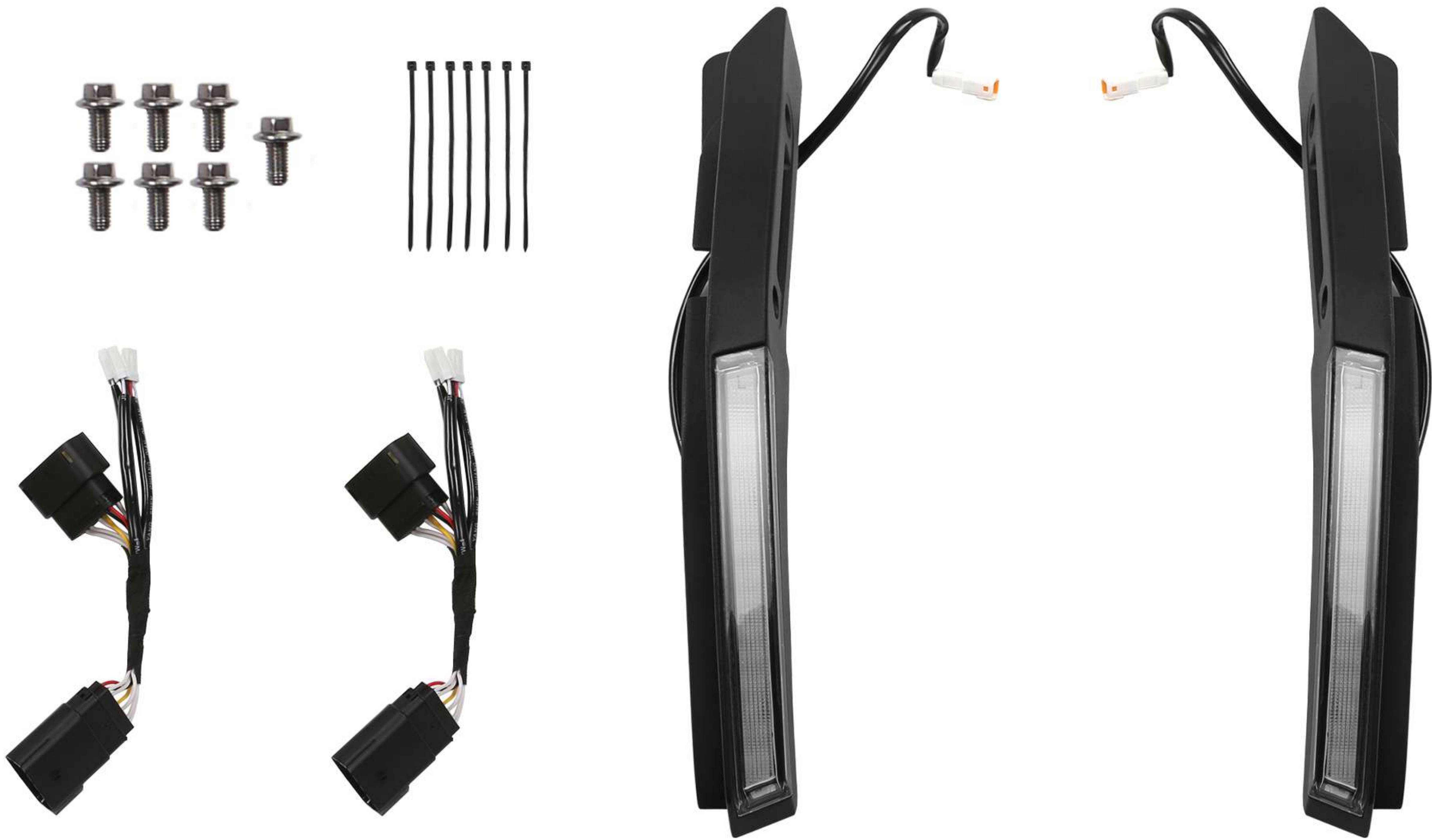
INSTALLATION INSTRUCTIONS

The trail sight light has two control modes

The first type: the trail sight light will only turn on when you turn on the side lights or headlights, if you adjust the lights to automatic mode, the trail sight light will follow the auto.

The second type: the trail sight light will light up when you unlock the vehicle and go out until you lock the vehicle. If you choose this mode, please use the adapter cable we gave you.

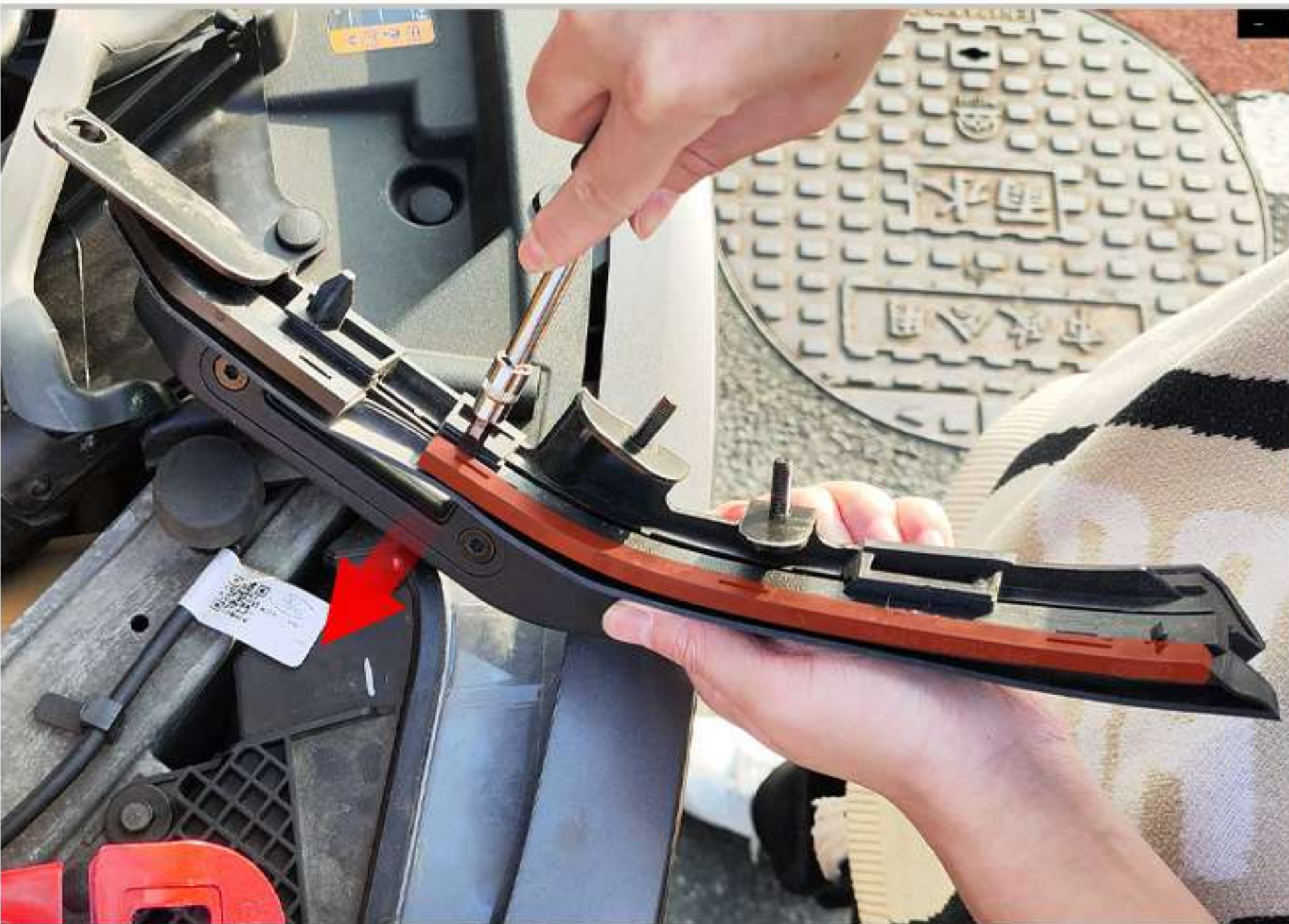
(Version without adapter cable)



1 Open the hood and prepare to remove the original car hood latch.

2 Use a tool to remove the screws located as shown in the diagram.

3 Continue to use the tool to remove the two screws located at the bottom position as shown in the diagram.



4 Pull out the original car hood latch handle.

5 Use tools to remove the rubber strip of the original car hood handle.

6 Install the rubber strip on our hood latch light.

The Installation Steps of The trail sight lights Are as Follows:



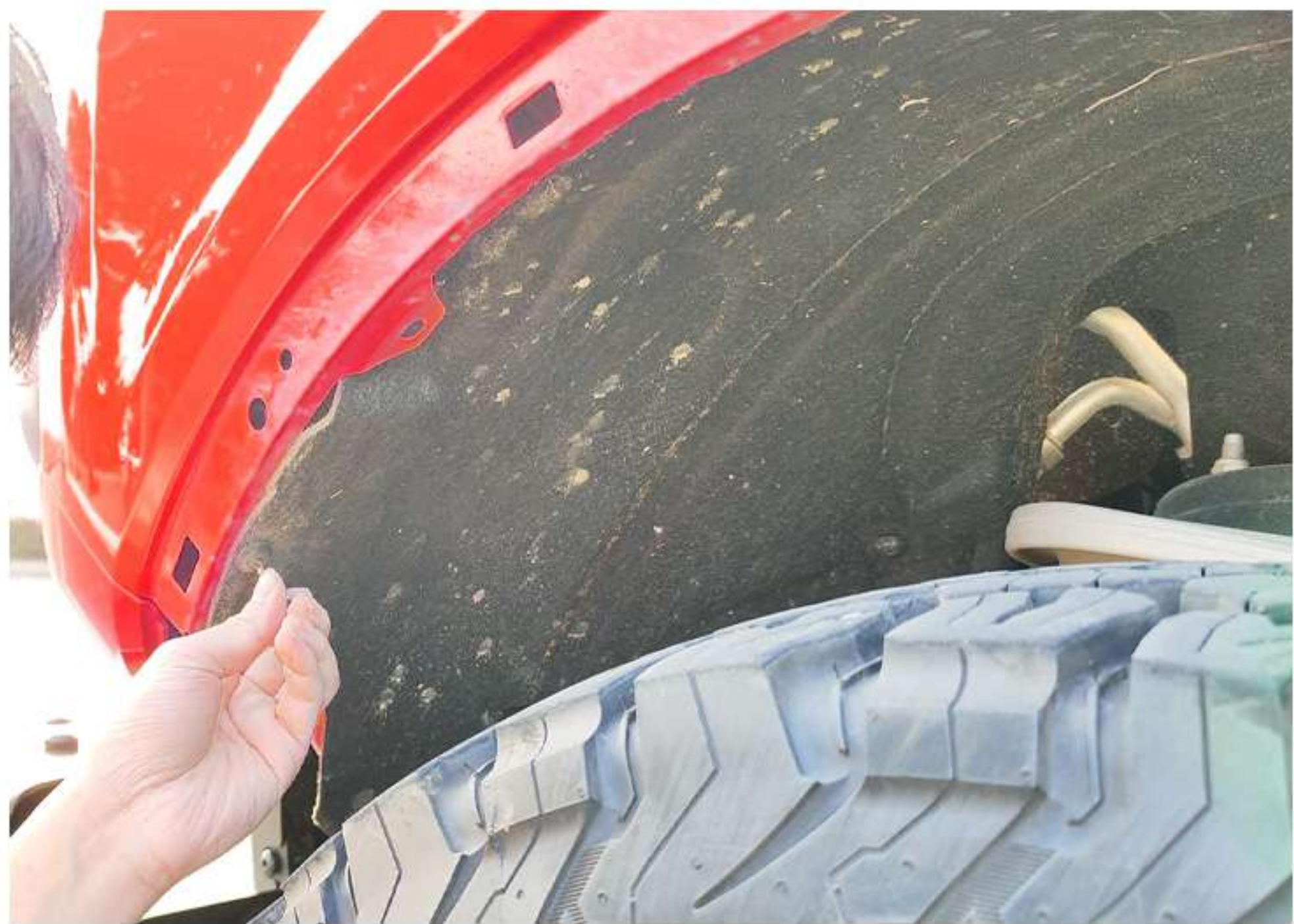
7 Use the accessory screws shown in the diagram to install and fix the hood latch light.



8 Use a tool to remove the screws located at the two positions of the original car hood latch handle.



9 Install the screws removed from the original car latch handle on our hood latch light.



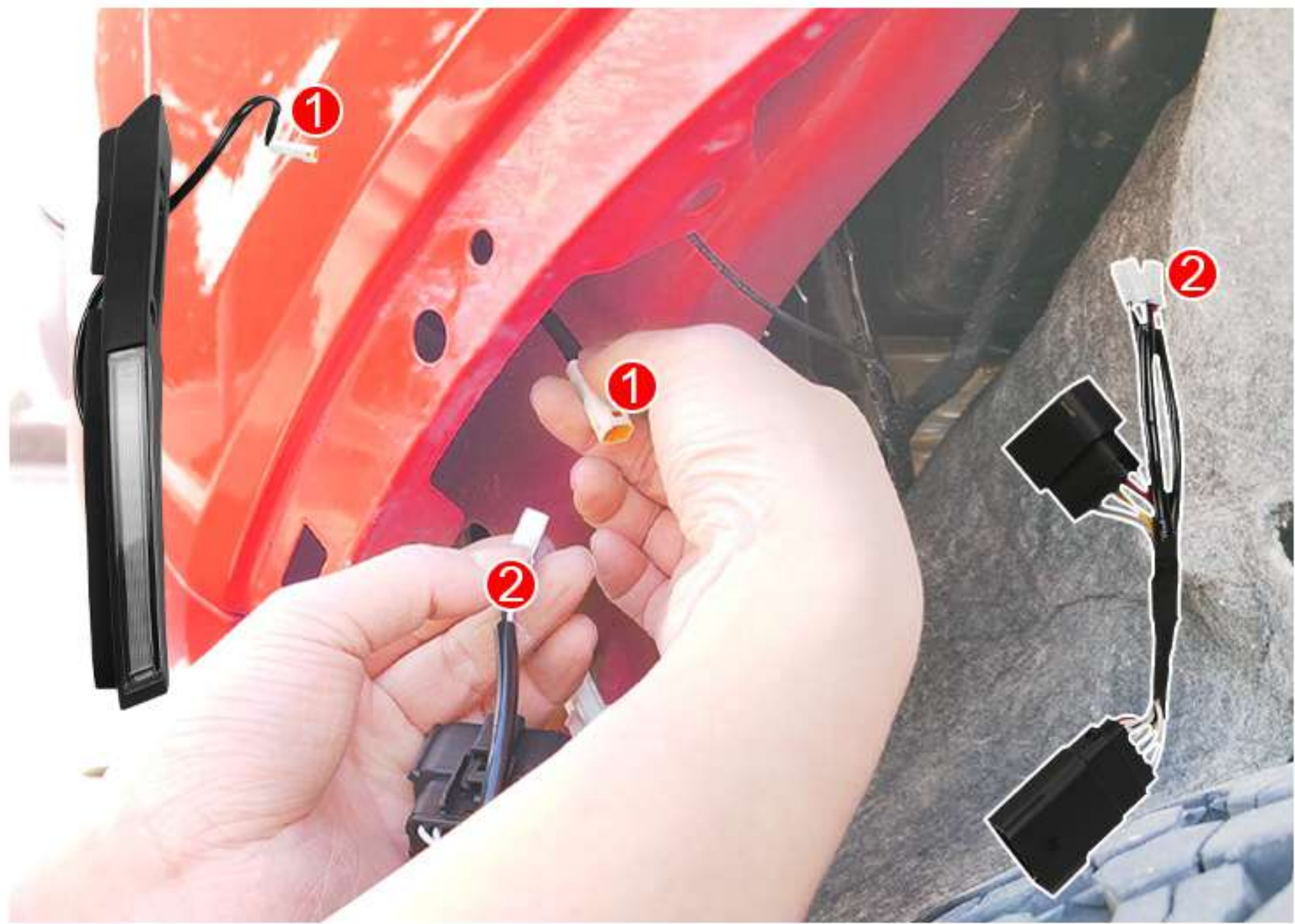
10 Remove a corner of the wheel arch and inner lining.



11 Pull out the original car headlight connector wire and unplug it.



12 Use the corresponding marked number on the accessory connector wire shown in the diagram to connect the headlight wire connector.



13 Pull out the connecting wire of the hood latch light and connect it to the accessory connector wire shown in the diagram (any of the three white connectors on the connector can be connected).

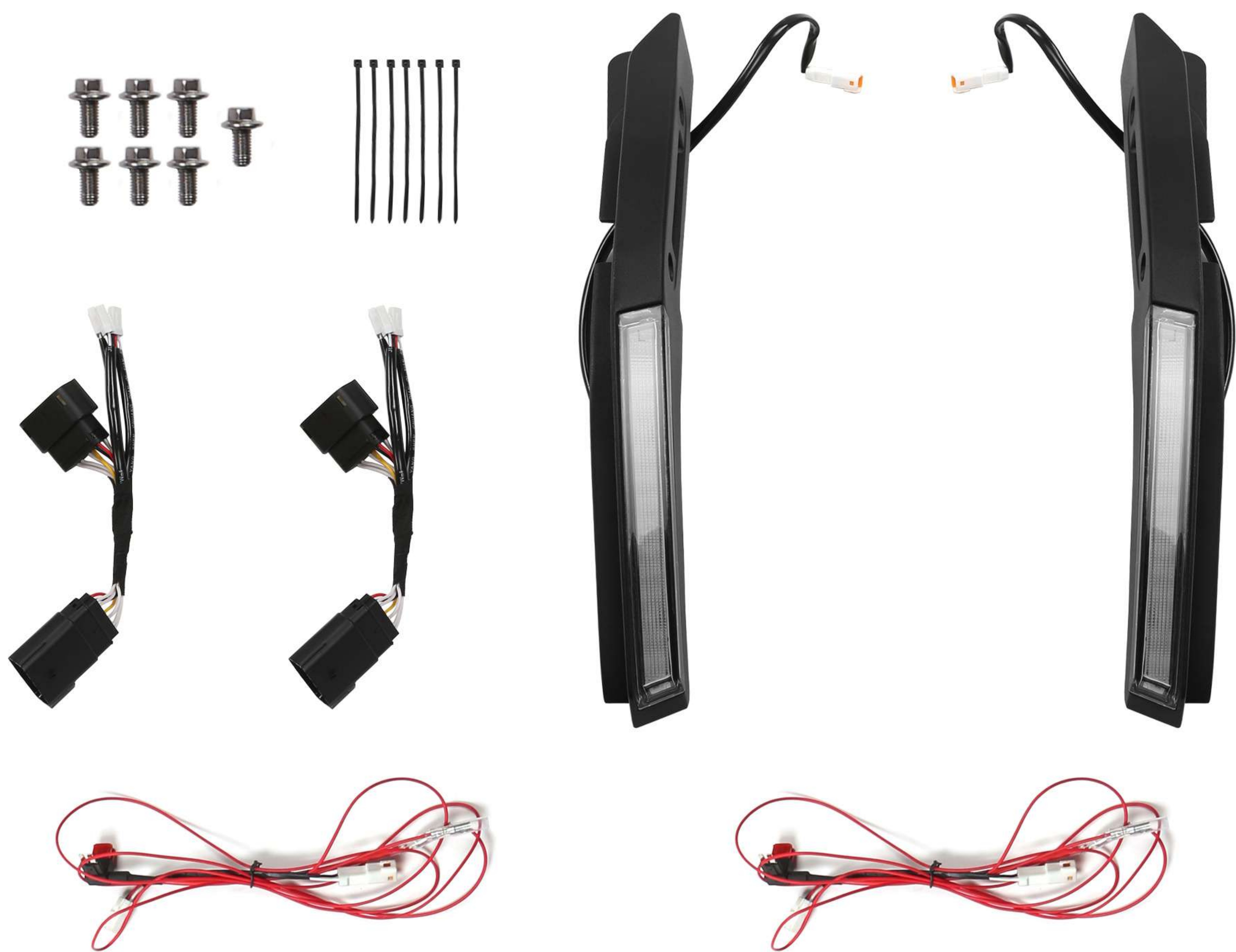


14 Restore the original car's inner lining and wheel arch, repeat the steps to install the hood latch light and connecting wire on the other side.



15 completed result .

(Version with Adapter Cable)



1 Open the hood and prepare to remove the original car hood latch.



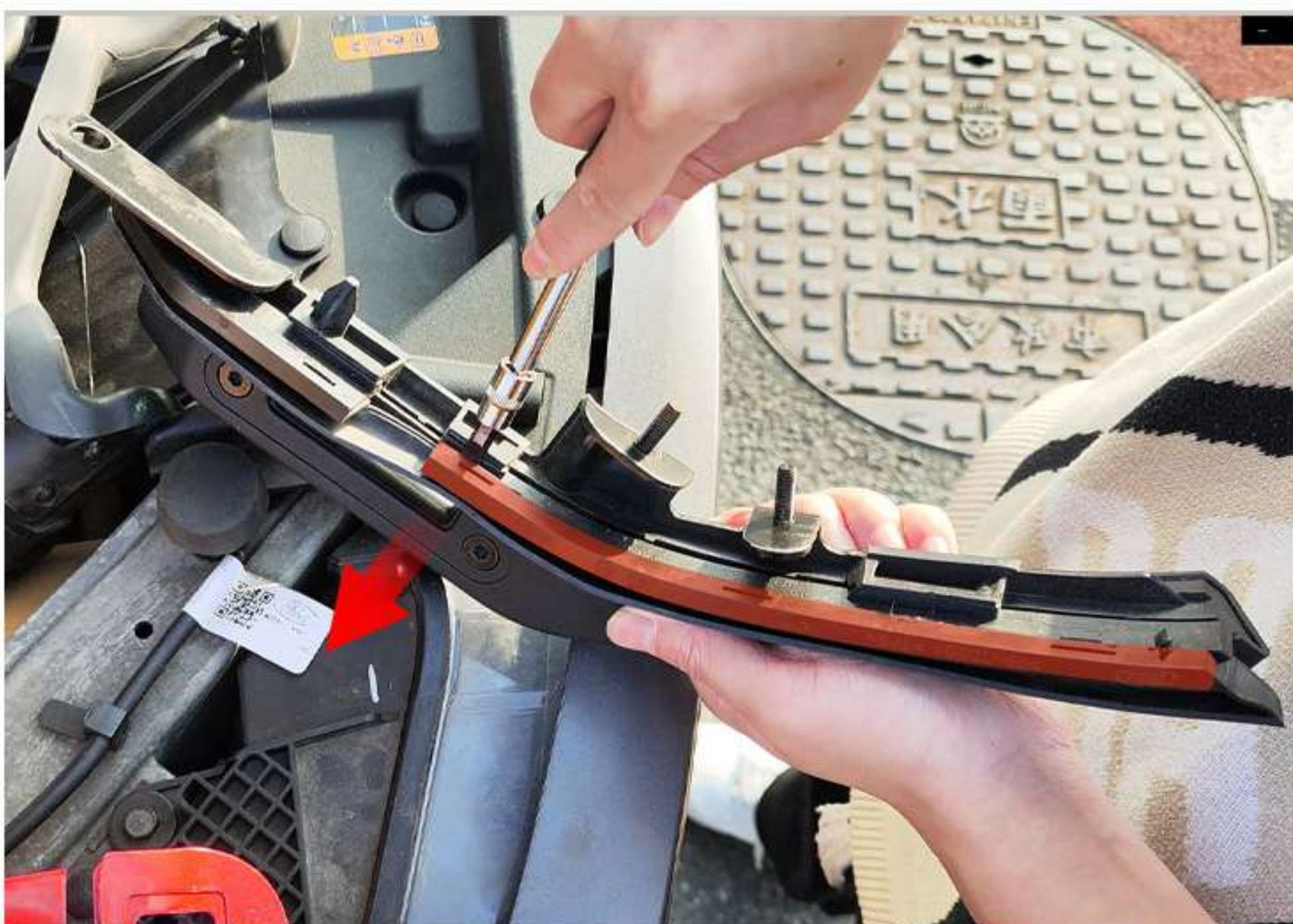
2 Use a tool to remove the screws located as shown in the diagram.



3 Continue to use the tool to remove the two screws located at the bottom position as shown in the diagram.



4 Pull out the original car hood latch handle.



5 Use tools to remove the rubber strip of the original car hood handle.



6 Install the rubber strip on our hood latch light.

The Installation Steps of The trail sight lights Are as Follows:



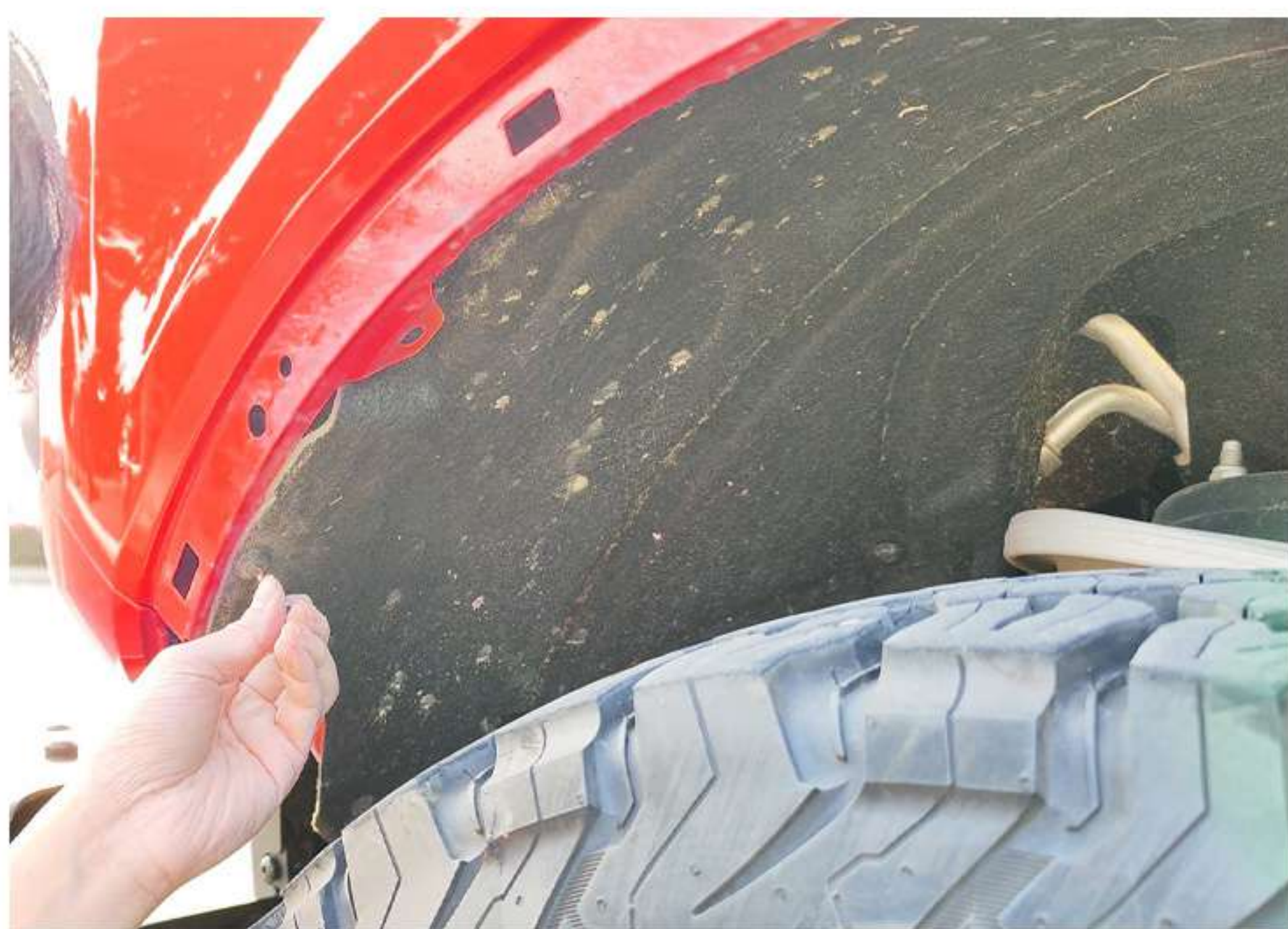
7 Use the accessory screws shown in the diagram to install and fix the hood latch light.



8 Use a tool to remove the screws located at the two positions of the original car hood latch handle.



9 Install the screws removed from the original car latch handle on our hood latch light.



10 Remove a corner of the wheel arch and inner lining.



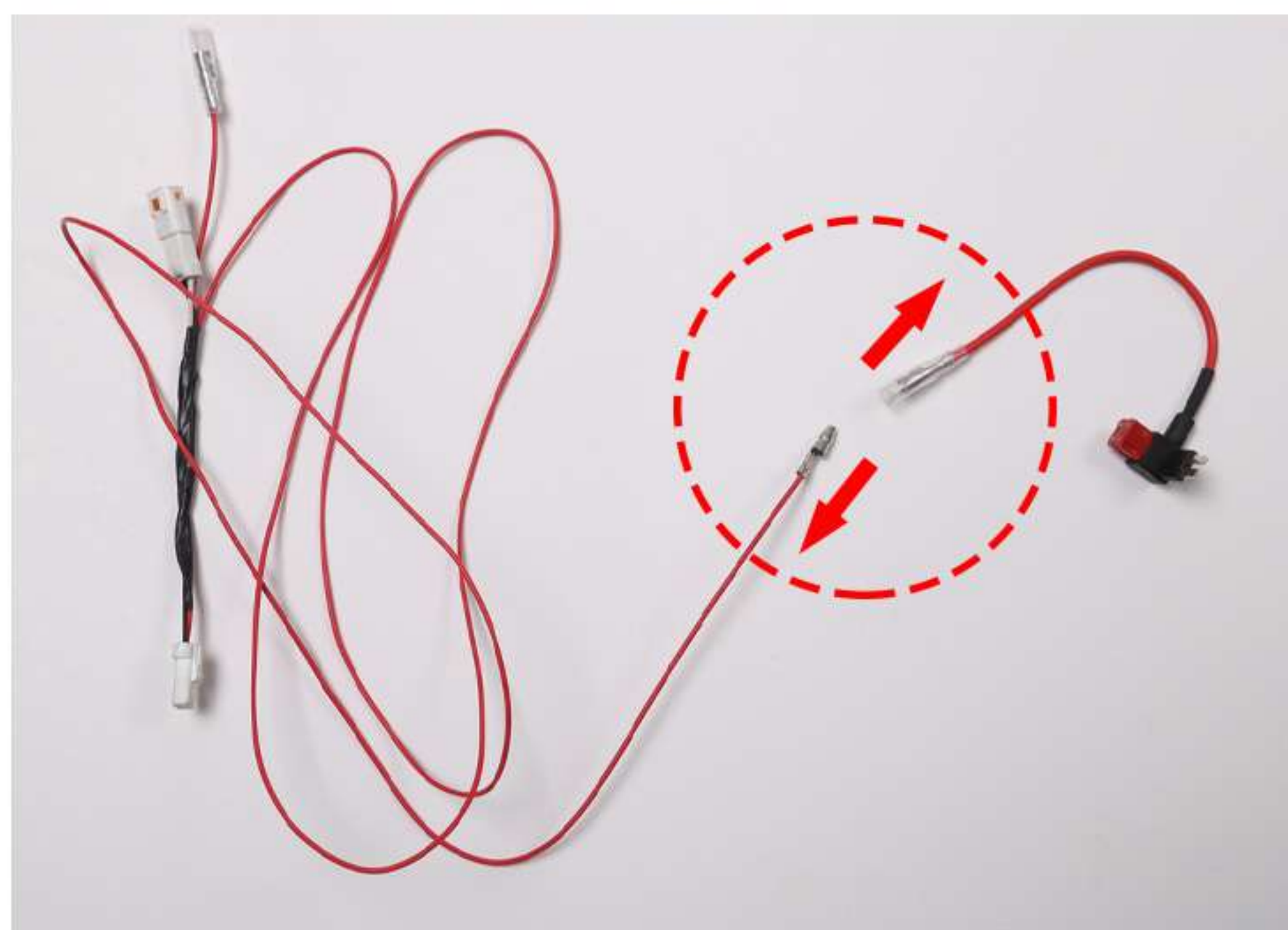
11 Pull out the original car headlight connector wire and unplug it.



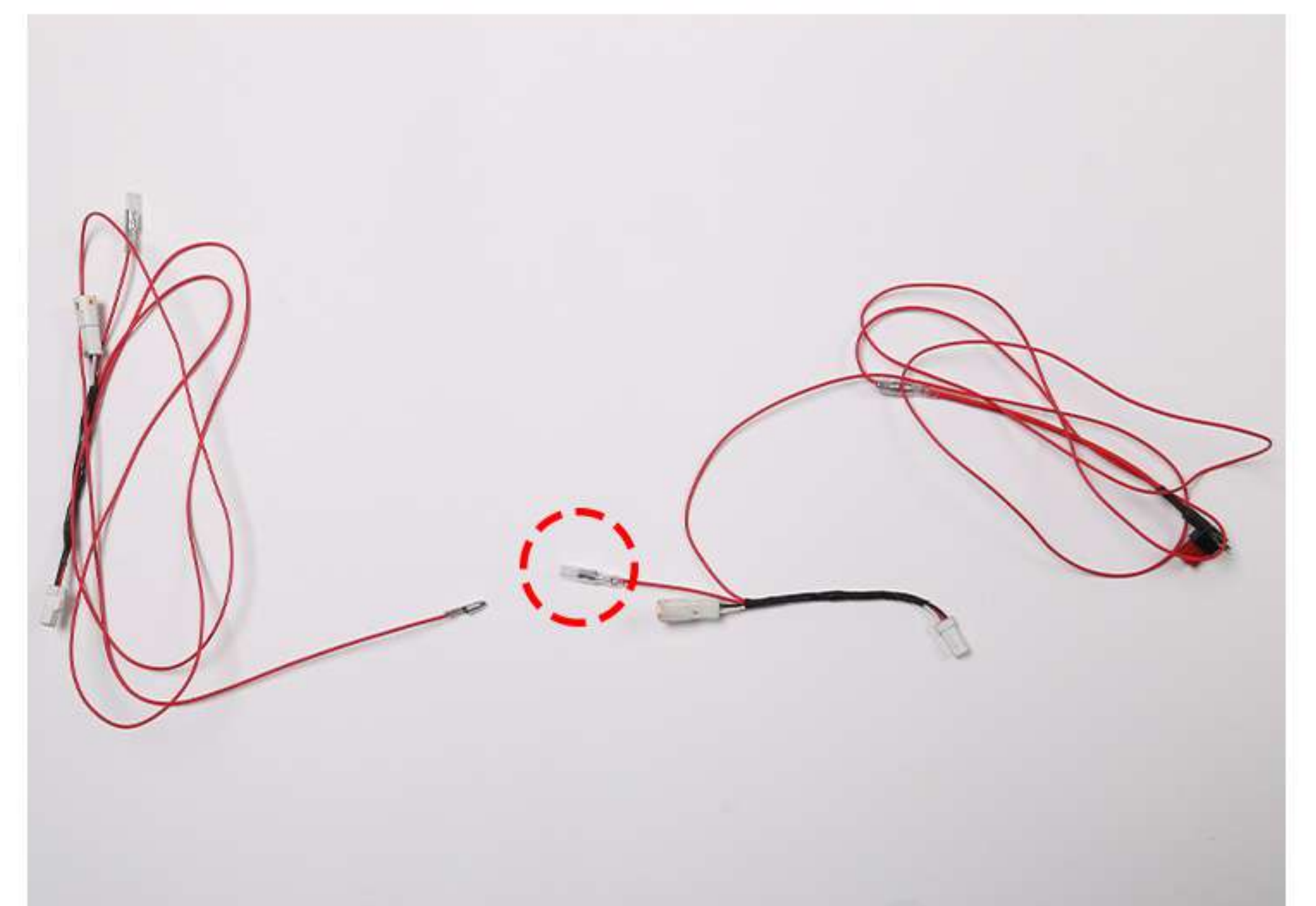
12 Use the corresponding marked number on the accessory connector wire shown in the diagram to connect the headlight wire connector.



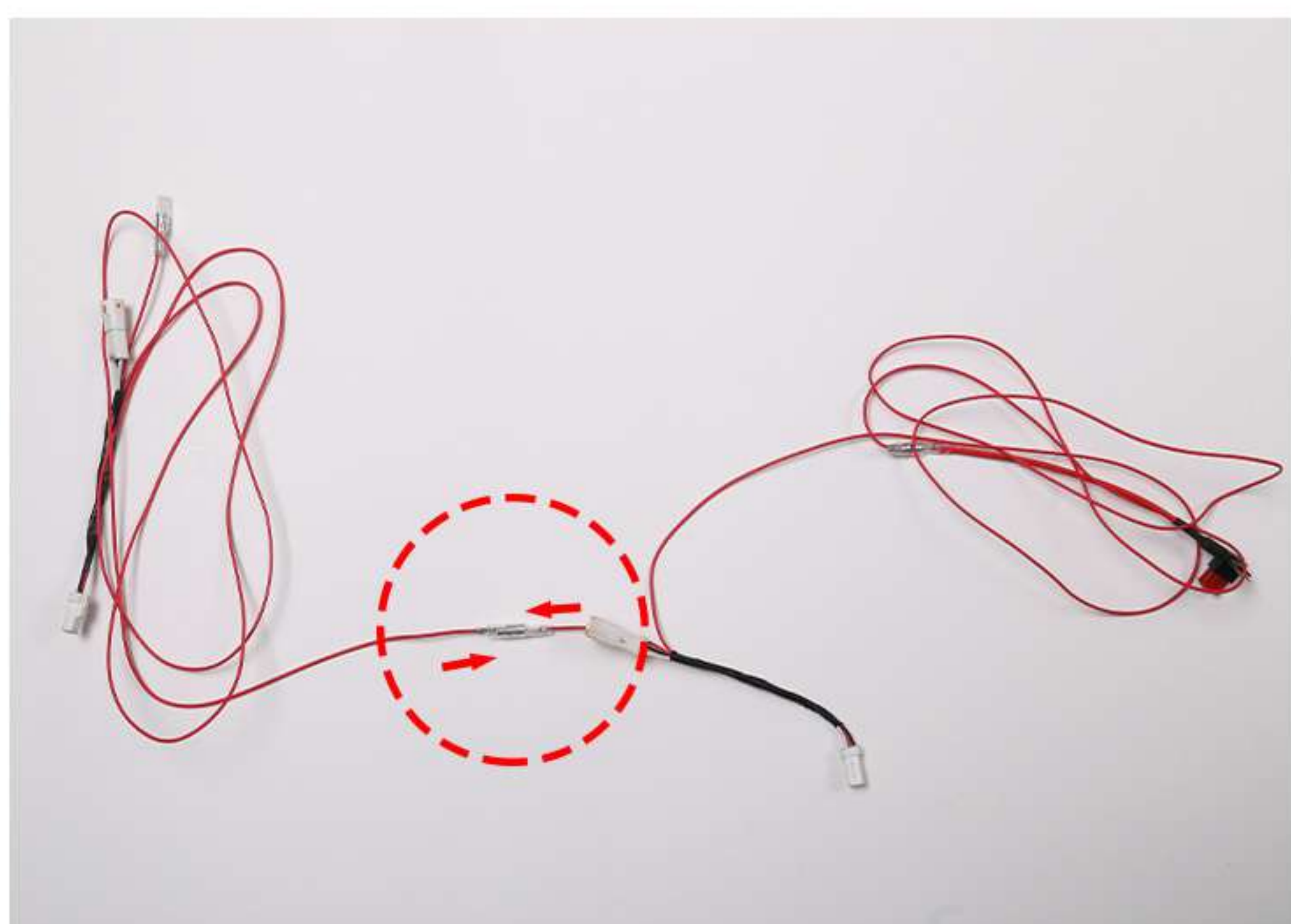
13 Take out two accessory wire harnesses.



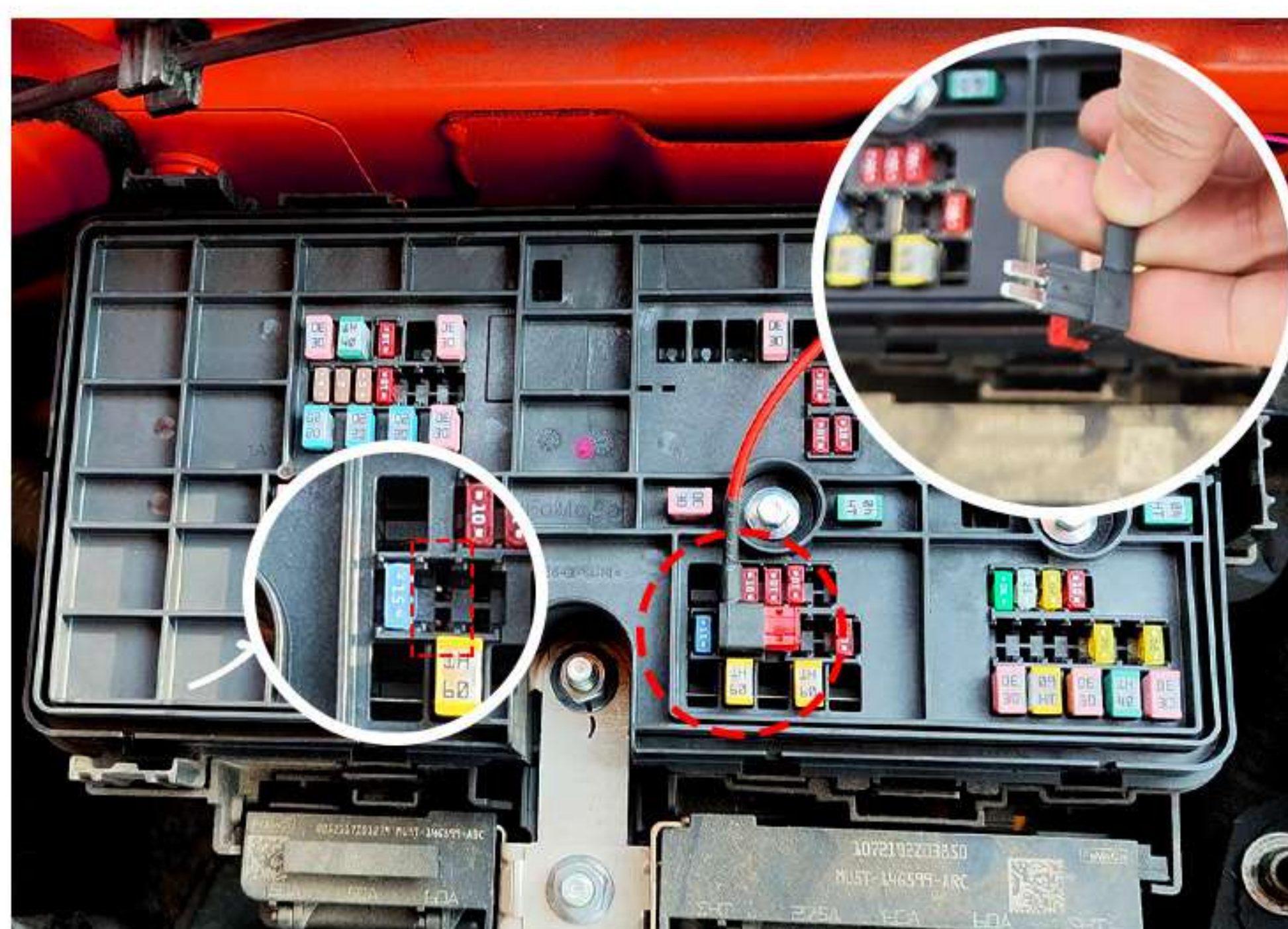
14 Unplug one wire harness from the marked location on the diagram.



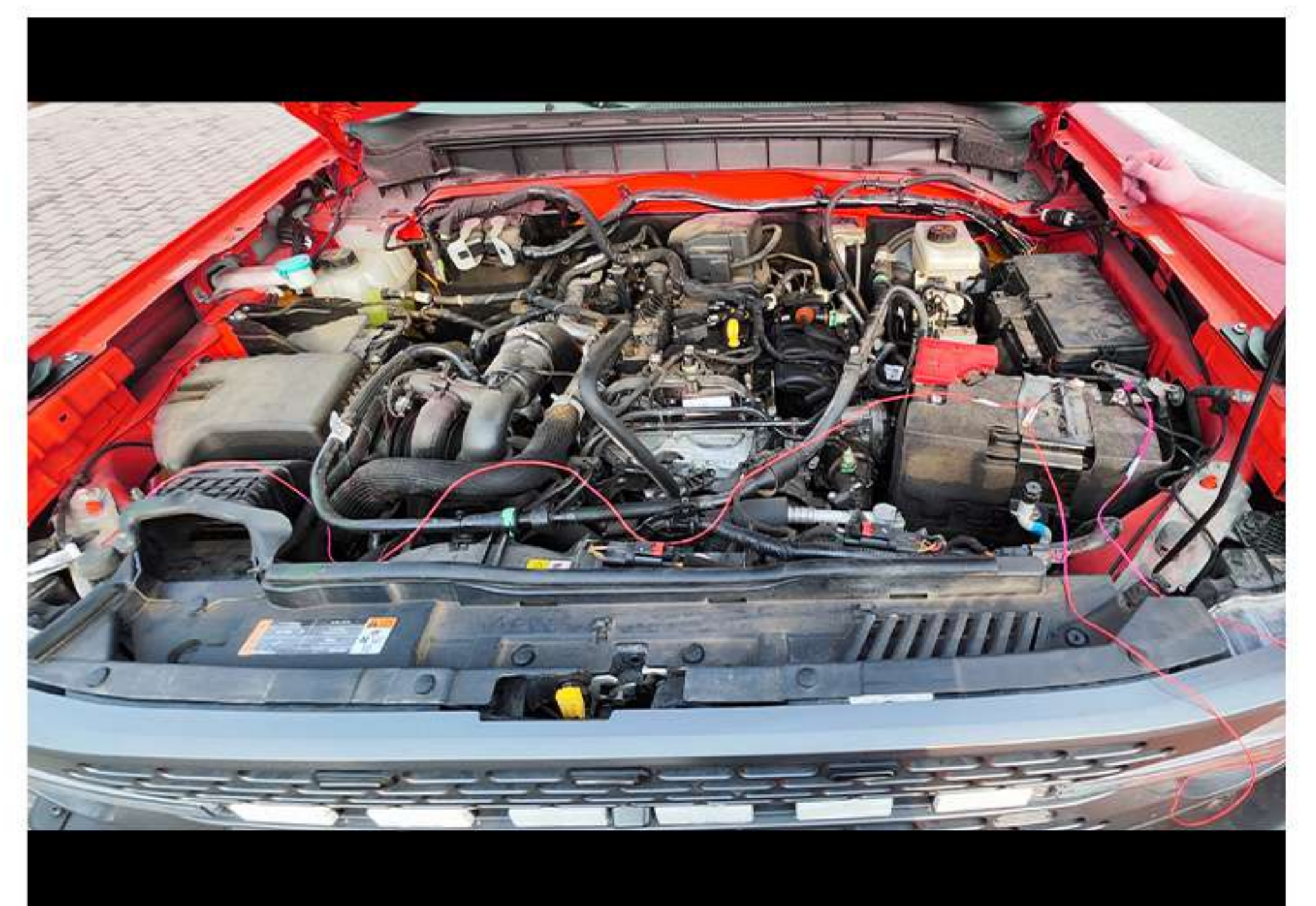
15 Take out the other wire harness and locate the connector position shown on the diagram for preparation of connection.



16 Complete the connection as shown.

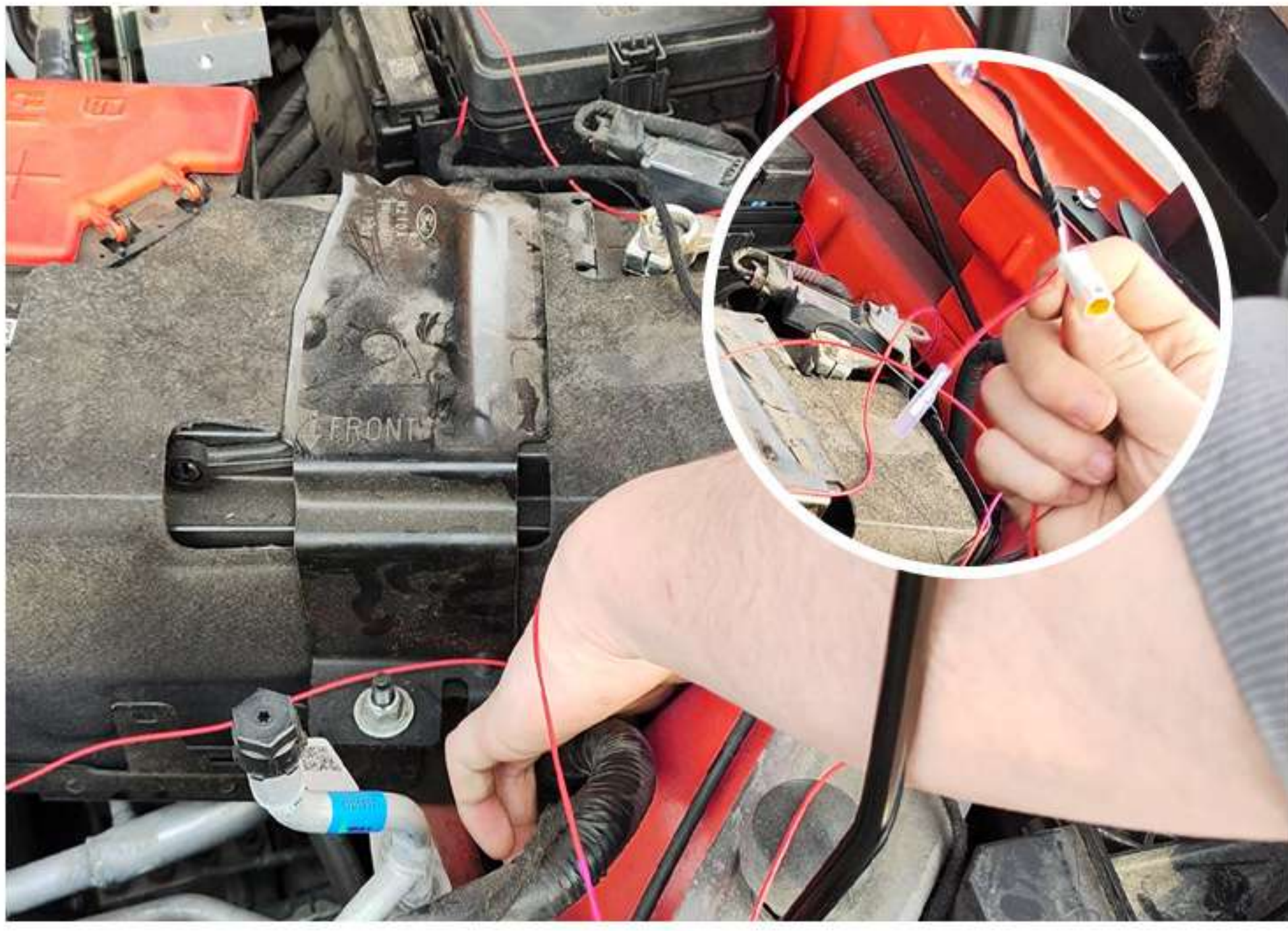


17 Plug the connector into the power interface position indicated on the diagram.

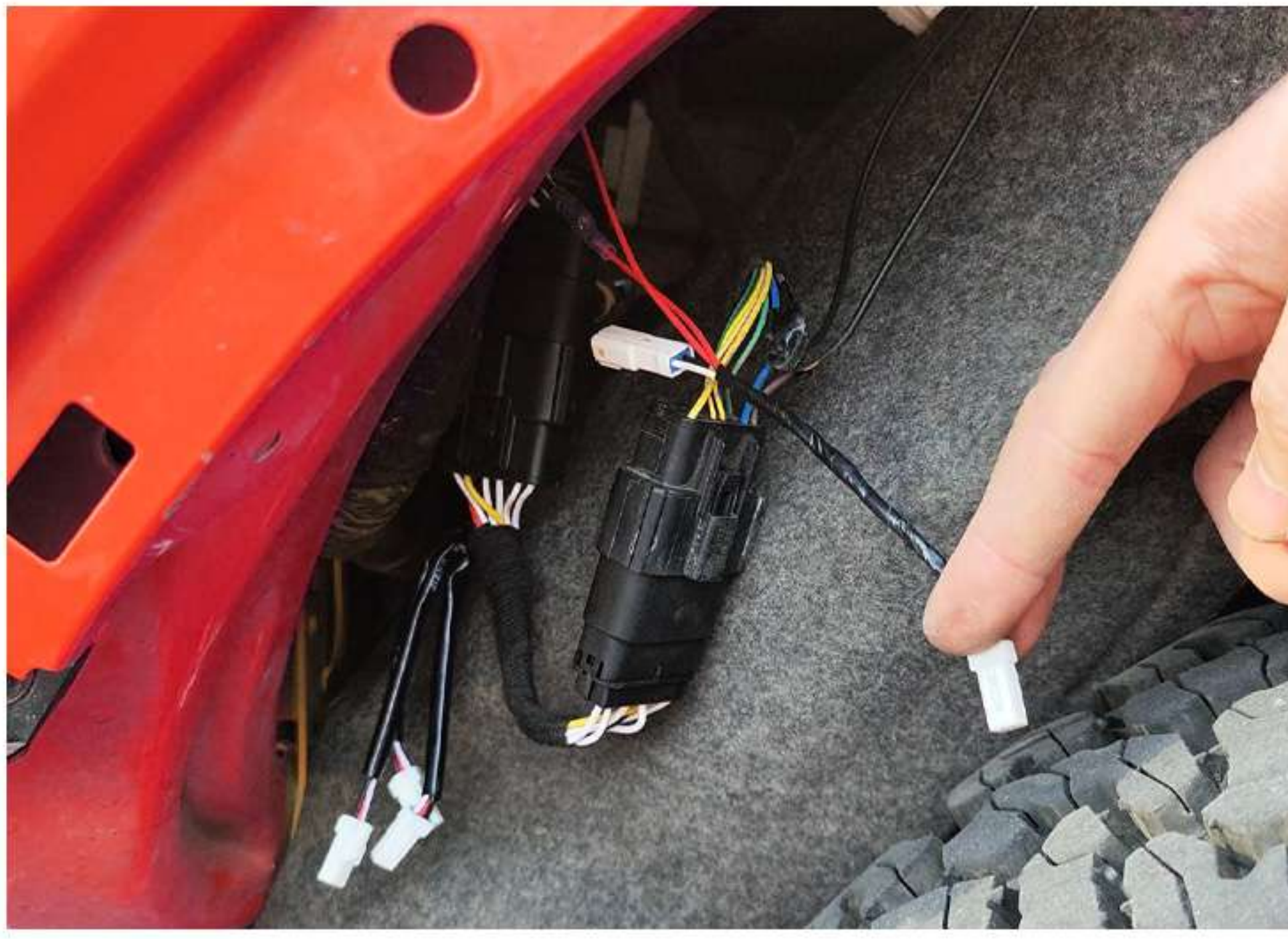


18 Engine compartment wiring as shown in the diagram.

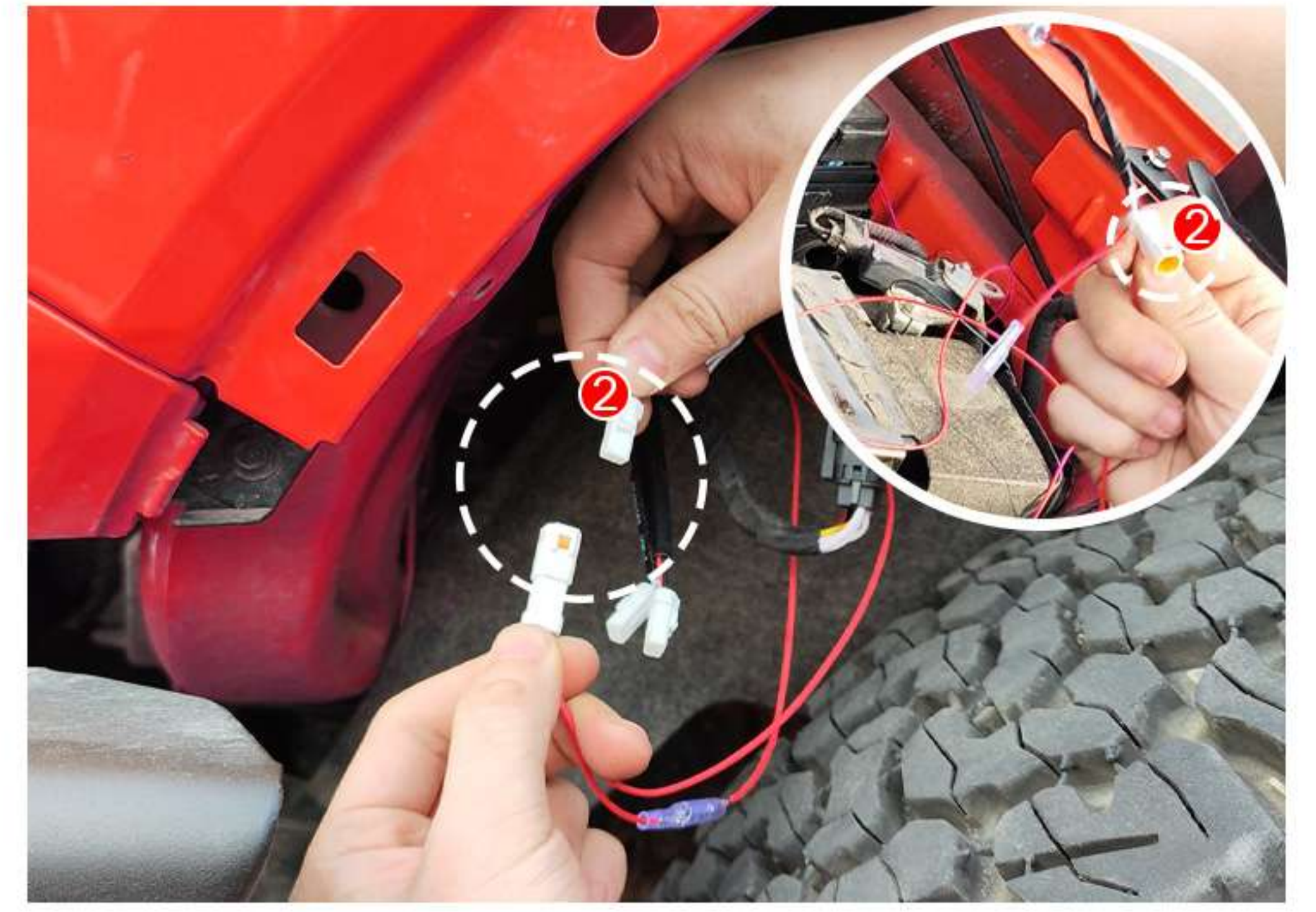
The Installation Steps of The trail sight lights Are as Follows:



- 19** Insert the two connectors of the illustrated wiring harness downwards into the bottom of the engine compartment.



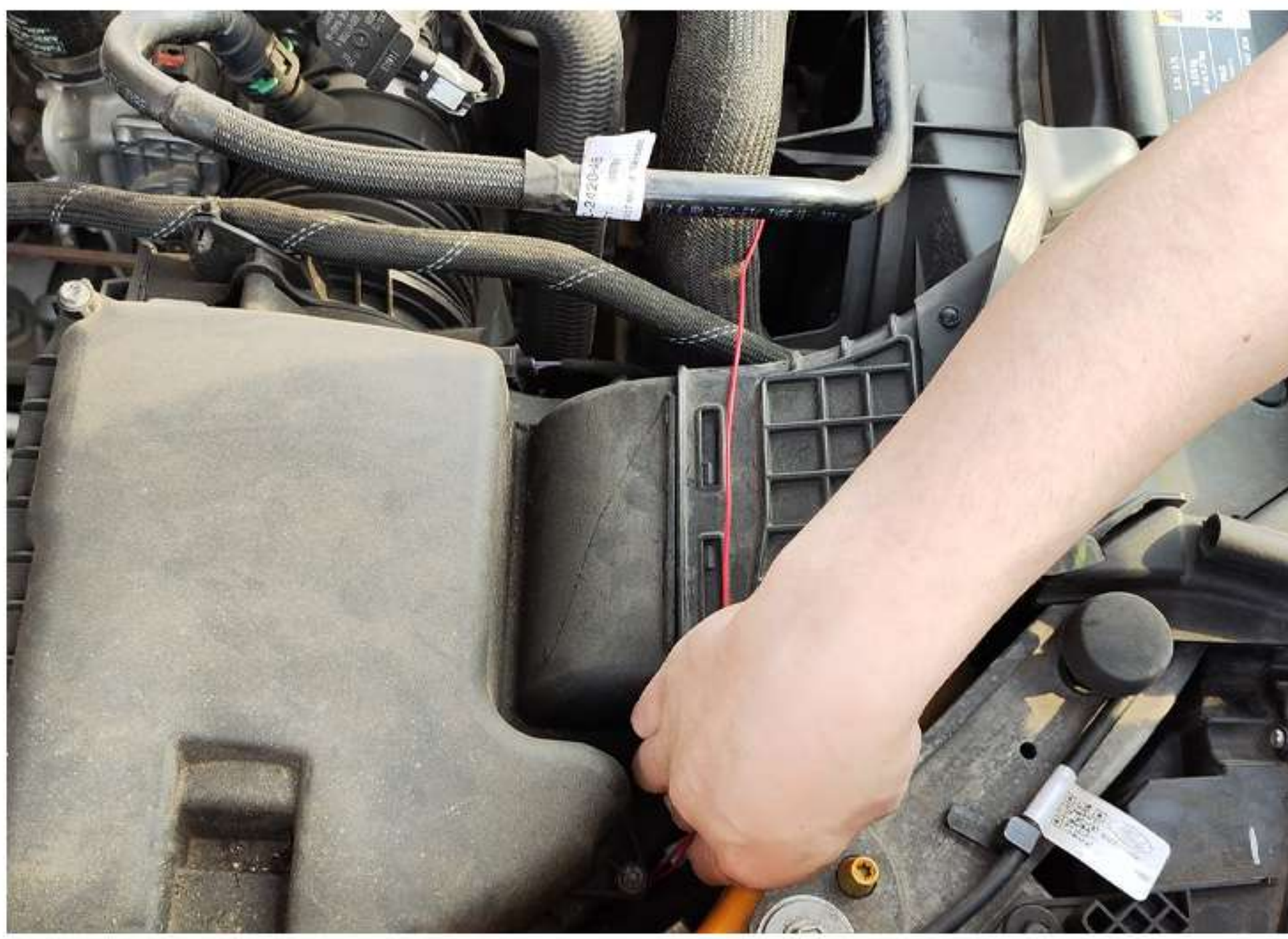
- 20** Pull out the connector that was just inserted from the bottom.



- 21** Connect the two connectors as shown in the diagram.



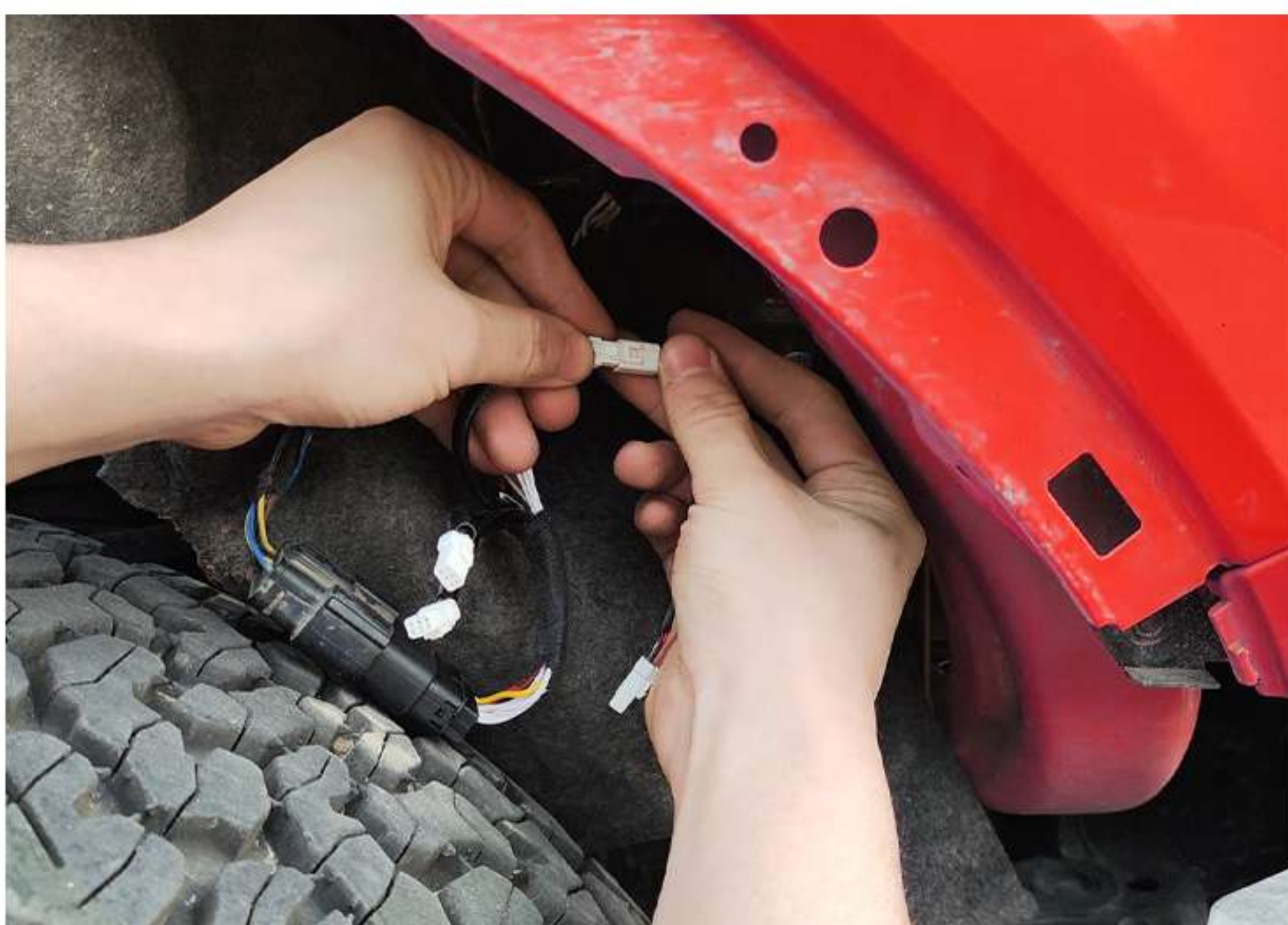
- 22** Connect the two connectors as shown in the diagram.



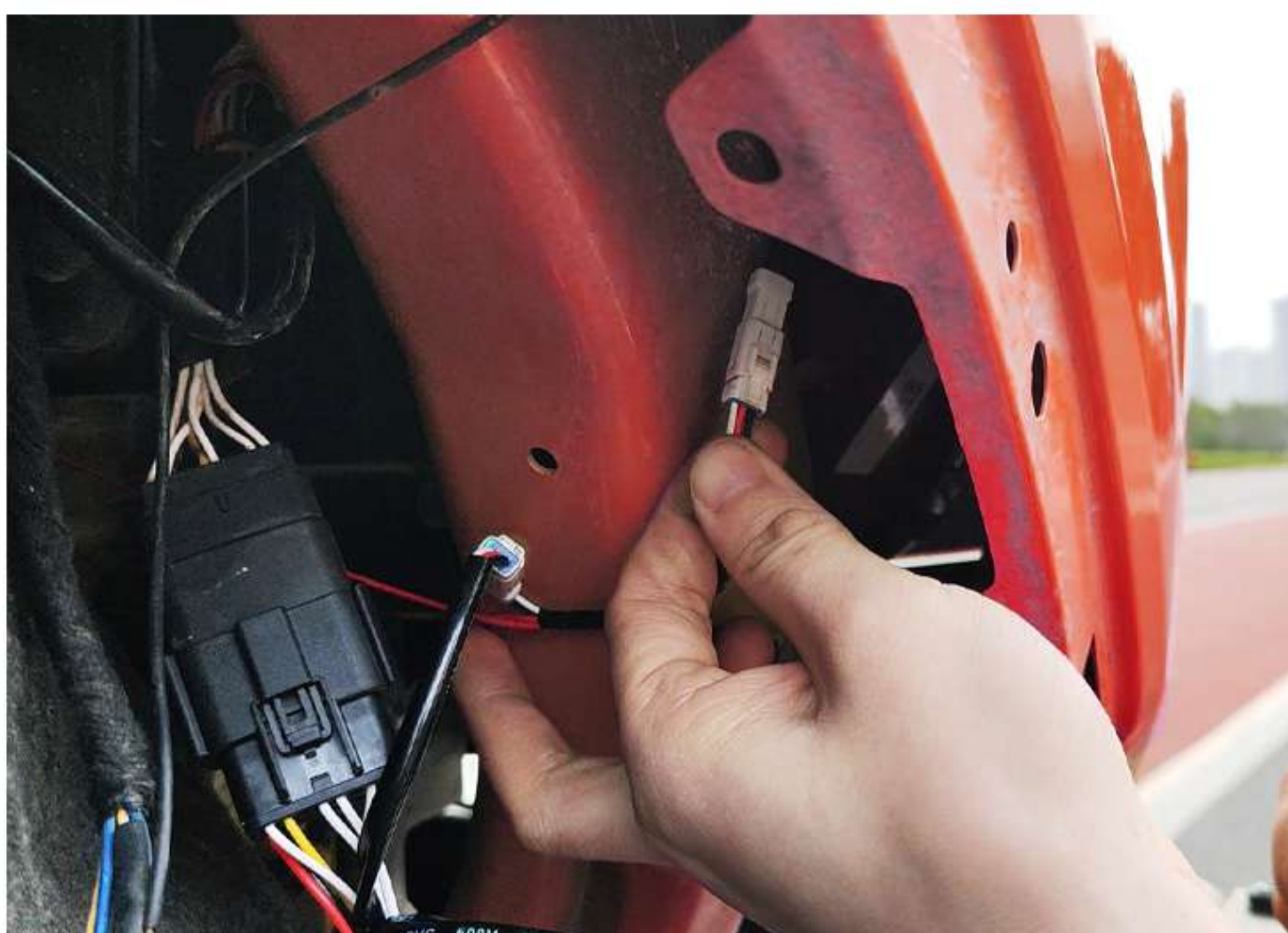
- 23** Repeat the steps and insert the other connector into the bottom of the right engine compartment.



- 24** Pull out the connector that was just inserted from the bottom.



- 25** Repeat the steps for connecting the connectors.



- 26** Repeat the steps for connecting the connectors.



- 27** completed result