



# ZROADZ<sup>®</sup>

## OFF ROAD PRODUCTS



### 2021 FORD BRONCO (ALL)

Z745401, Z745421  
ROCK SLIDER SIDE STEPS

PARTS ARE PATENT PENDING. ALL RIGHTS RESERVED - COPYRIGHT ©2016 - ZROADZ LED, INC.

## PARTS INCLUDED

### Z745401 (4 DOOR)

- (1) - Left Rock Slider Side Step
- (1) - Right Rock Slider Side Step

### Z745421 (2 DOOR)

- (1) - Left Rock Slider Side Step
- (1) - Right Rock Slider Side Step

## HARDWARE

### Z745401 (4 Door)

- (12) 10 Mm Flange Nut
- (2) 10 Mm Bolt
- (4) 8 Mm Bolt

### Z745421 (2 Door)

- (8) 10 Mm Flange Nut
- (2) 10 Mm Bolt
- (2) 8 Mm Bolt

## TOOLS REQUIRED

- Drive Ratchet
- 10 Mm Socket
- 13 Mm Socket

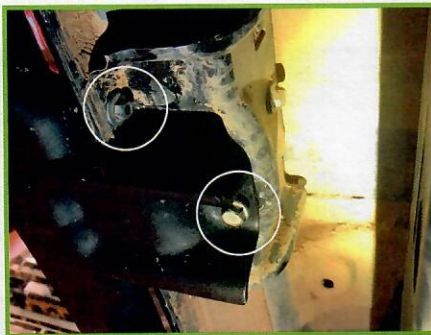
## INSTALLATION GUIDE

### START HERE

PLEASE READ AND UNDERSTAND ALL INSTRUCTIONS BEFORE INSTALLATION. Auto makers offer varied models to each vehicle and occasionally manufacture more than one body style of the same model. To assure your part is correct, our tech department can be contacted at [orders@zroadz.com](mailto:orders@zroadz.com) to verify fitment and assist with technical questions. All other inquires can be directed to [orders@zroadz.com](mailto:orders@zroadz.com). In the event you do not have internet access please call 844-653-8040

\* APPLICATION MODELS VARY. WE RECOMMEND TO VERIFY FITMENT BEFORE BEGINNING INSTALLATION PROCESS.  
\* IMAGES FEATURED IN THE INSTRUCTION DOCUMENTS MAY NOT ALWAYS EXACTLY MATCH YOUR MODEL OR PART.

## STEP 1



1) Skip to Step 3 if your vehicle is not equipped with the factory Rock Rails. If they are equipped, remove them by carefully untightening the single bolt and the (2) nuts at each attachment point.

The 2 Door Bronco has a front and a rear attachment point on each side whereas the 4 Door Bronco has a front, middle and rear attachment point on each side. All horizontal bolts are 6 Mm in size and in turn use 10 Mm Flange Nuts. The vertical bolts vary in size depending on their position. Only the front attachment points use the vertical 10 Mm bolts. The other vertical attachment points use an 8 Mm bolt.

## STEP 2



2) Remove the factory Rock Rails.



**ZROADZ**<sup>®</sup>  
OFF ROAD PRODUCTS

## INSTALLATION - CONTINUED

PARTS ARE PATENT PENDING, ALL RIGHTS RESERVED - COPYRIGHT ©2016 - ZROADZ LED, INC.

### STEP 3



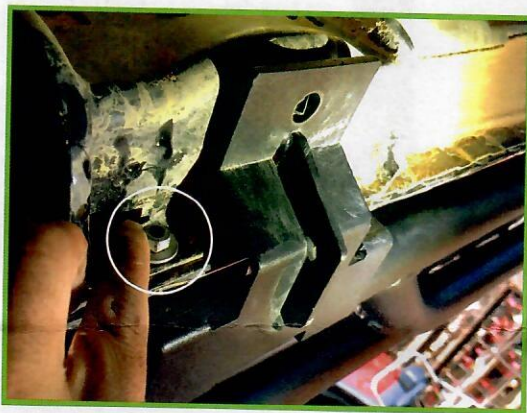
3) Identify the correct Side Step for its corresponding side. The front-end of a Side Step can be distinguished by the first attachment point. The first attachment point will have a taller bracket welded to the Side Step tubing.

### STEP 4



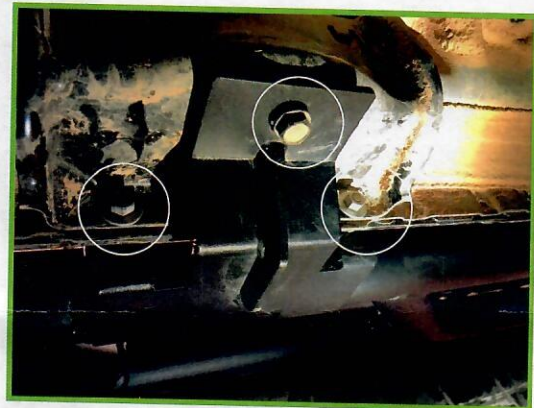
4) Using the same points of attachment from the factory Rock Rails align the ZROADZ Side Steps similarly. If your vehicle did not have factory Rock Rails, locate pairs of 6.5 Mm holes at about 5" apart on the body pinch seam.

### STEP 5



5) Ensure that each stud from the ZROADZ Side Steps extrudes across the body pinch seam. Without tightening at this time, use the 10 Mm Flange Nuts for each pair of horizontal bolts at each attachment point.

### STEP 6



6) Using the provided 8 Mm and 10 Mm bolts, install them into the hole found vertically as shown above. Remember that only the front attachment uses the 10 Mm bolt while the others use an 8 Mm bolt. Once each attachment point has been aligned, tighten each nut and bolt securely. This completes the installation procedure for Z745401 / Z745421.

**LED LIGHT BRACKET INSTALLATION - PROCESS COMPLETE**